

MAY 2026 HM MANNING SNAPSHOT

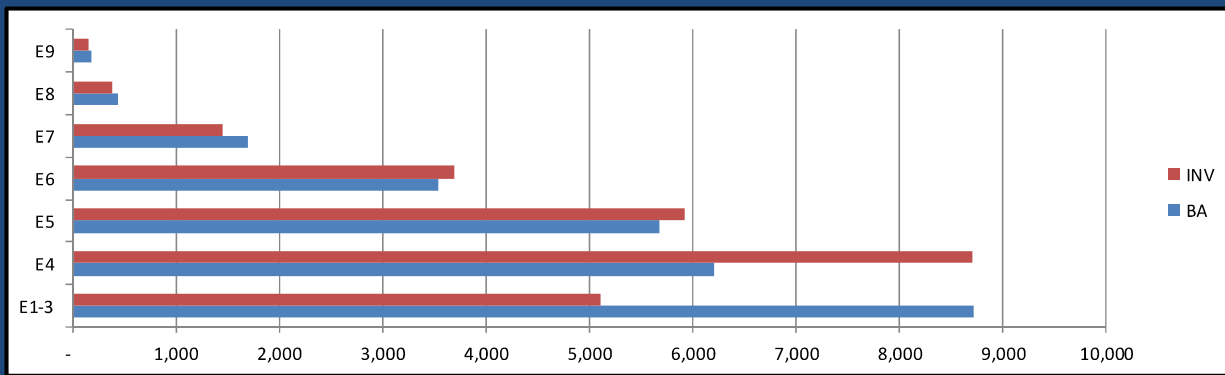
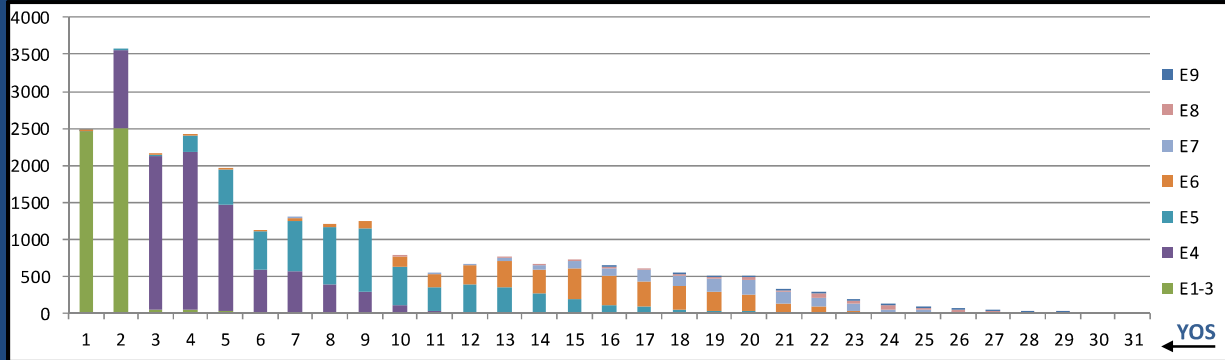
HM NEC MANNING 5 May 2026	NEC	BA	INV WITH PRIMARY NEC	INV/BA PRIMARY NEC	PRODUCTION NOTES	TOTAL INV W/NEC	TOTAL NEC INV/BA
SAR TECH	L00A	177	124	70.1%		124	70.1%
SUB IDC	L01A	201	179	89.1%		179	89.1%
JUNIOR SUB HM	L01B	N/A	N/A	N/A	Tracking Only	21	N/A
SO IDC	L02A	274	250	91.2%		250	91.2%
FIELD MED TECH	L03A	5413	6711	124.0%		10802	199.6%
AERO MED TECH	L04A	562	523	93.1%		523	93.1%
RAD HEALTH TECH	L05A	91	92	101.1%		93	102.2%
CV TECH	L06A	54	54	100.0%		93	172.2%
AERO PHYS TECH	L07A	86	71	82.6%		72	83.7%
BIOMED EQ TECH	L08A	502	379	75.5%		379	75.5%
NUC MED TECH	L09A	13	19	146.2%		19	146.2%
SURFACE IDC	L10A	1158	983	84.9%		984	85.0%
PREV MED TECH	L12A	707	626	88.5%		627	88.7%
HEMO TECH	L13A	13	15	115.4%		15	115.4%
OPHTH SURG TECH	L14A	10	11	110.0%		11	110.0%
ULTRASOUND TECH	L15A	15	17	113.3%	2 Sailor carries all L17A/L15A/L16A NECs	19	126.7%
MAMO TECH	L16A	10	10	100.0%	2 Sailor carries all L17A/L15A/L16A NECs	11	110.0%
ADV X-RAY TECH	L17A	608	488	80.3%	Train to L15A & L16A	516	84.9%
CT TECH	L17B	N/A	N/A	N/A	Tracking Only Pending Billets	19	N/A
END TECH	L18A	17	15	88.2%		15	88.2%
OPTICIAN	L19A	158	118	74.7%		120	75.9%
PT TECH	L20A	206	174	84.5%		178	86.4%
OT TECH	L21A	12	11	91.7%		11	91.7%
PHARM TECH	L22A	605	443	73.2%		446	73.7%
SURG TECH	L23A	1053	867	82.3%	Train to L14A & L25A	920	87.4%
MENTAL HLTH	L24A	600	546	91.0%		550	91.7%
UROLOGY TECH	L25A	43	48	111.6%		48	111.6%
ORTHOPEDIC TECH	L26A	134	107	79.9%		107	79.9%
DIVE MED TECH	L27A	106	91	85.8%	Train to L28A	93	87.7%
DIVE IDC	L28A	120	86	71.7%		86	71.7%
MORTICIAN	L29A	14	14	100.0%		14	100.0%
HISTO TECH	L30A	26	19	73.1%		19	73.1%
MED LAB TECH	L31A	1099	808	73.5%		811	73.8%
RES THERAPIST	L32A	191	167	87.4%		168	88.0%
DENTAL ASSISTANT	L33A	1486	1477	99.4%		1512	101.7%
DENT HYGIENIST	L35A	90	55	61.1%		55	61.1%
DENT LAB BASIC	L36A	90	72	80.0%	Train to L37A	77	85.6%
DENT LAB ADV	L37A	97	77	79.4%		78	80.4%
DENT ORALMAX	L38A	8	5	62.5%		5	62.5%
EMERGENCY MED TECH	L50A	N/A	N/A	N/A	Tracking Only	599	N/A
PARAMEDIC	L50B	N/A	N/A	N/A	Tracking Only Pending Billets	48	N/A
POMI	L60A	N/A	N/A	N/A	Tracking Only	77	N/A
DRUG & ALCOHOL COUNS. INTERN	810B	55	61	110.9%	Train to 810C 10 other HM NECs have the 810B NEC	70	127.3%
DRUG & ALCOHOL COUNSELOR	810C	93	45	48.4%	2 other HM NECs have the 810C NEC	46	49.5%

		BA	INV	INV/BA
General Duty HM	0000/L03A	15682	16287	103.9%
NECs (less L03A)		10784	9147	84.8%
NOS G000 TOTAL		26466	25434	96.1%

Critically Undermanned <85% Undermanned 85%-94% Healthy 95%-104% Overmanned >105%

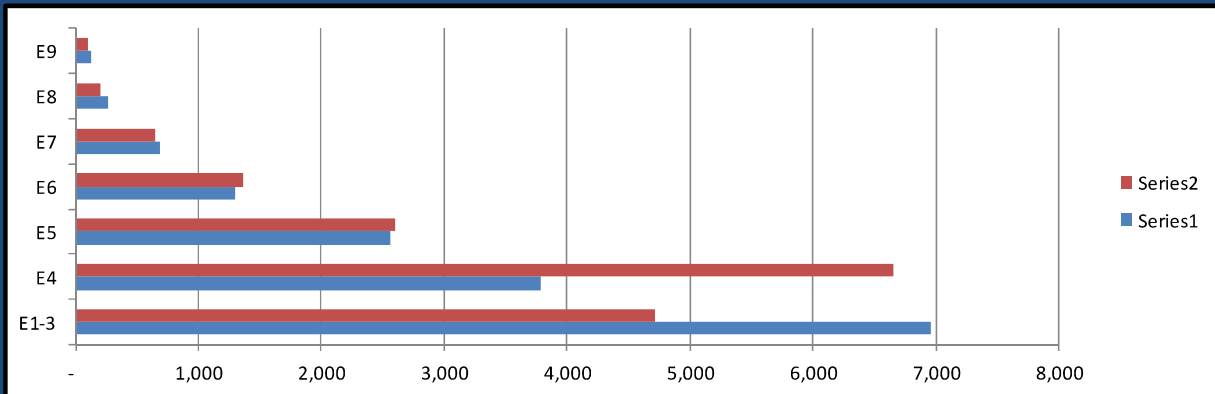
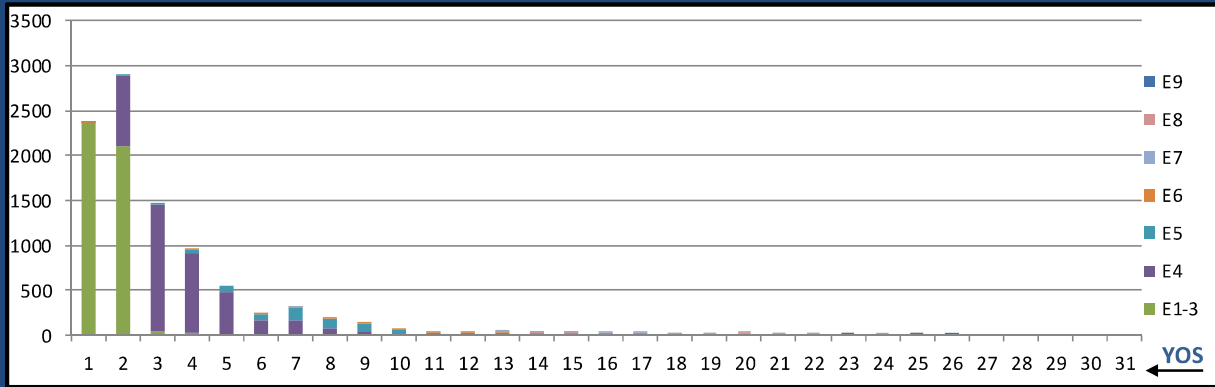
MAY 2026 HM MANNING SNAPSHOT

NOS G000-All



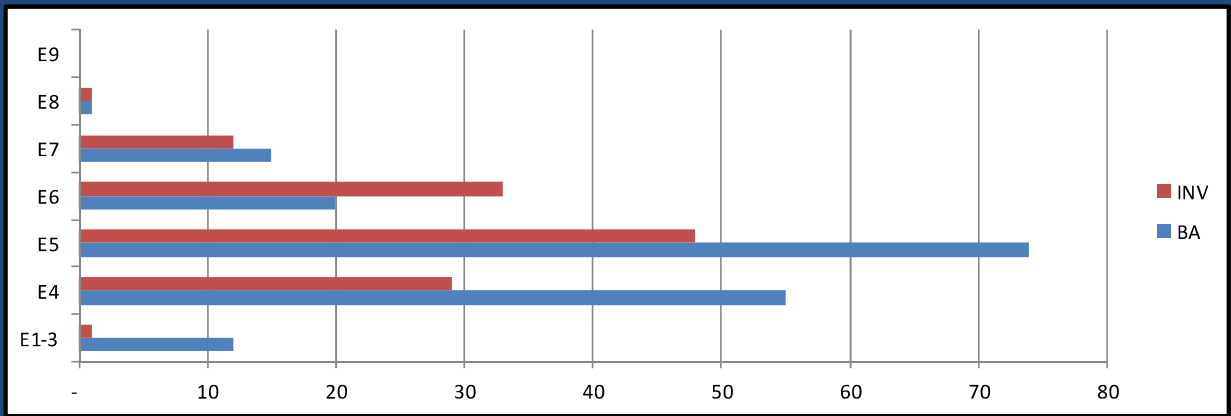
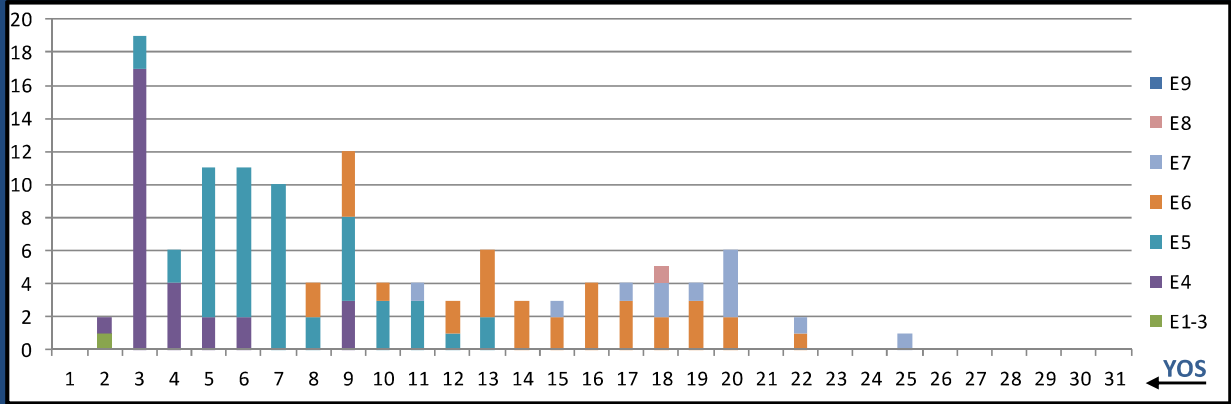
	E1-3	E4	E5	E6	E7	E8	E9	Total
%INV to BA	59%	140%	104%	104%	86%	89%	87%	96%
BA	8,717	6,207	5,682	3,542	1,698	438	182	26,466
Total Inventory	5,114	8,702	5,925	3,689	1,457	388	159	25,434
SJA Inventory	93%	104%	104%	104%	86%	86%	86%	

G000 GEN DUTY (0000/L03A)



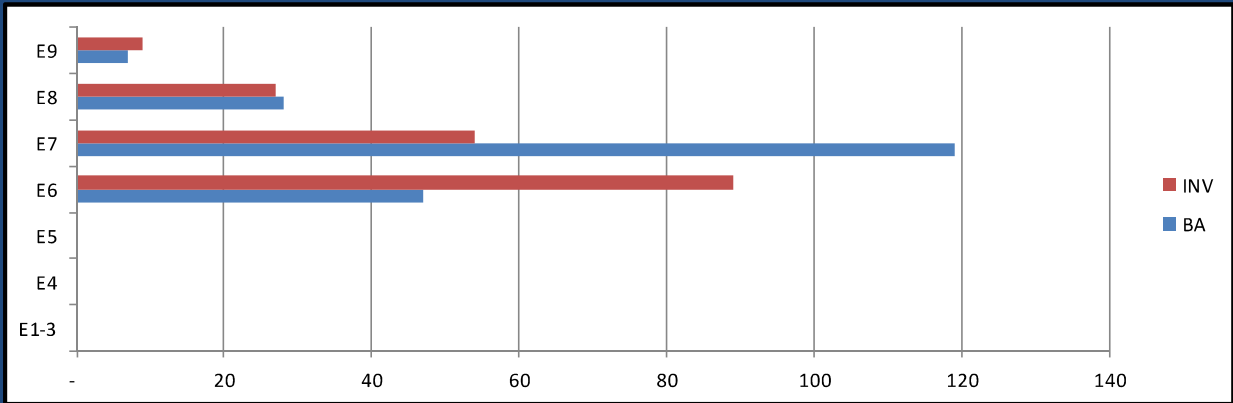
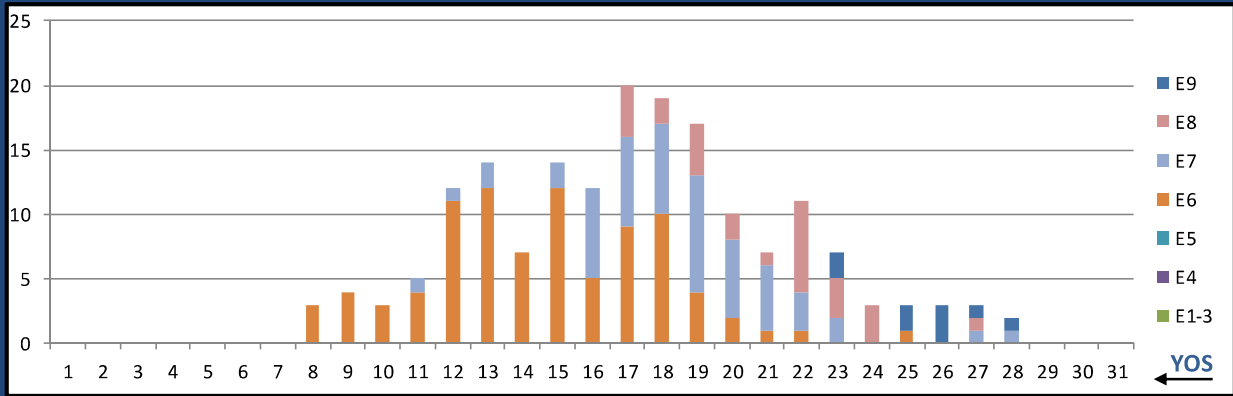
	E1-3	E4	E5	E6	E7	E8	E9	Total
%INV to BA	68%	176%	102%	105%	94%	79%	76%	104%
BA	6,968	3,781	2,558	1,296	684	264	128	15,679
Total Inventory	4,711	6,657	2,605	1,364	645	208	97	16,287
SJA Inventory	106%		103%		88%			

LOOA SAR TECH



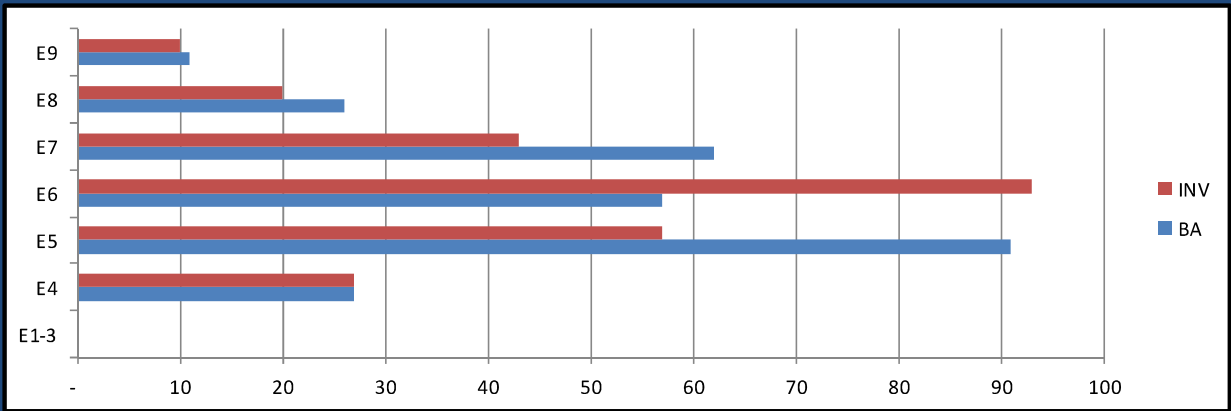
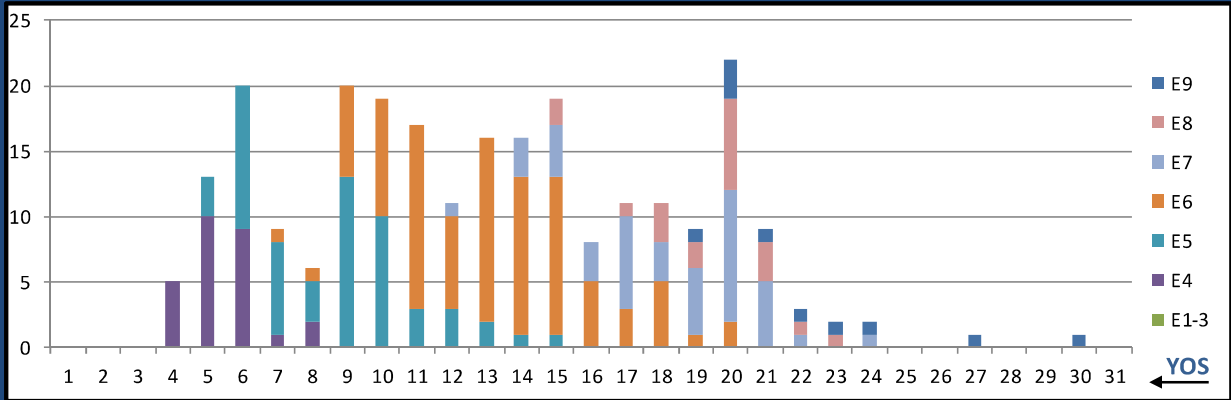
	E1-3	E4	E5	E6	E7	E8	E9	Total
%INV to BA	8%	53%	65%	165%	80%	100%	0%	70%
BA	12	55	74	20	15	1	-	177
Total Inventory	1	29	48	33	12	1	-	124
SJA Inventory	45%		86%		81%			

L01A SUB FORCE IDC



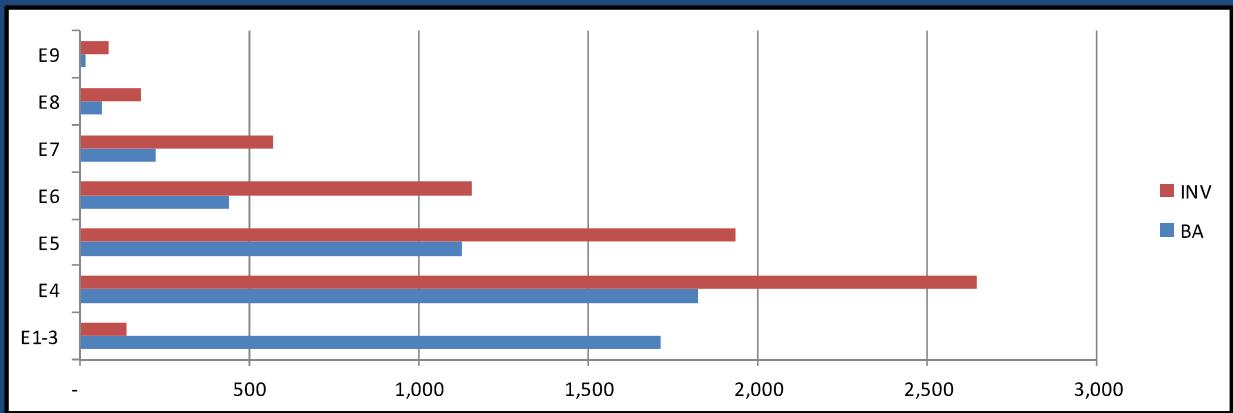
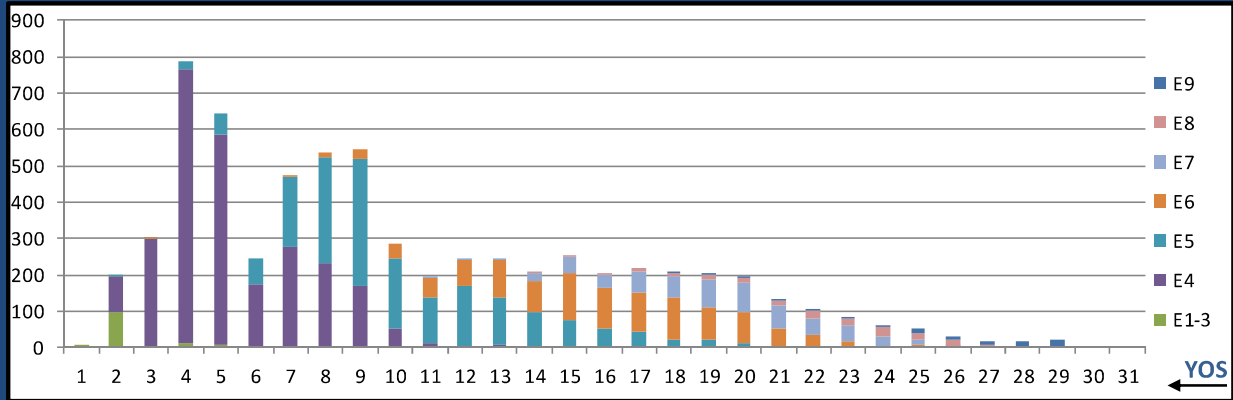
	E1-3	E4	E5	E6	E7	E8	E9	Total
%INV to BA	0%	0%	0%	189%	45%	96%	129%	89%
BA	-	-	-	47	119	28	7	201
Total Inventory	-	-	-	89	54	27	9	179
SJA Inventory	#DIV/0!		189%		58%			

L02A SO IDC



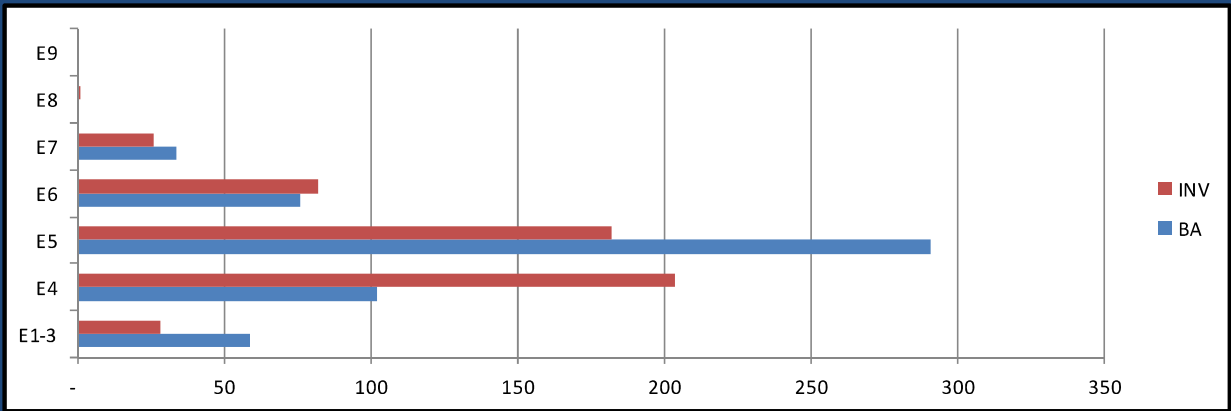
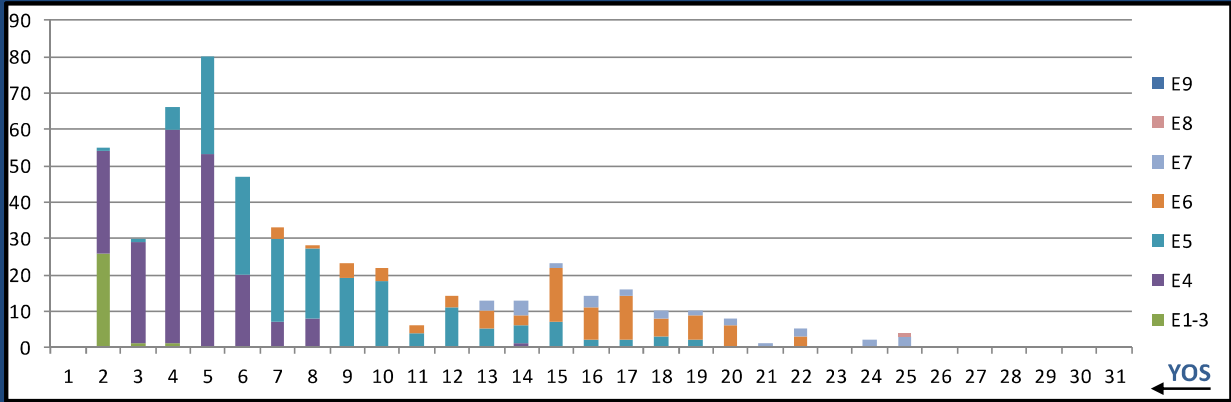
	E1-3	E4	E5	E6	E7	E8	E9	Total
%INV to BA	0%	100%	63%	163%	69%	77%	91%	91%
BA	-	27	91	57	62	26	11	274
Total Inventory	-	27	57	93	43	20	10	250
SJA Inventory	100%		101%		74%			

L03A FLD MED TECH



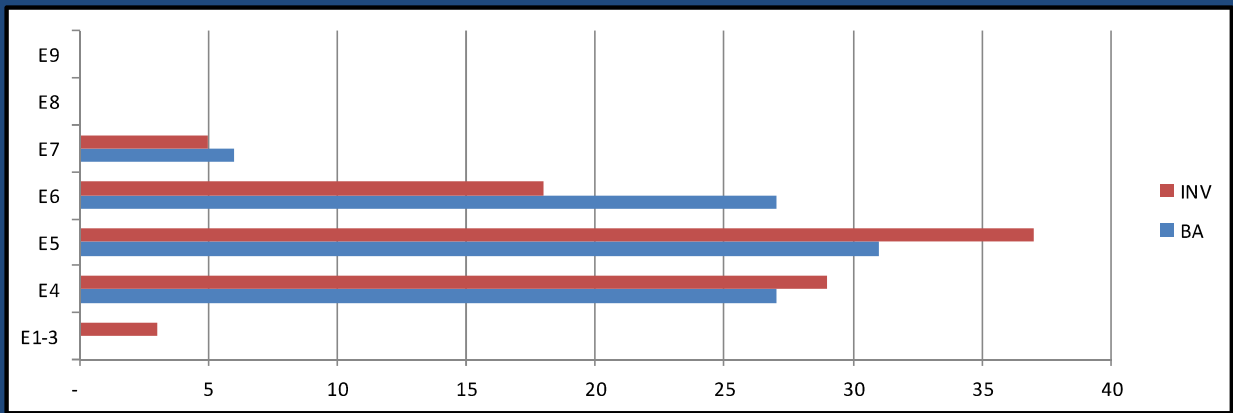
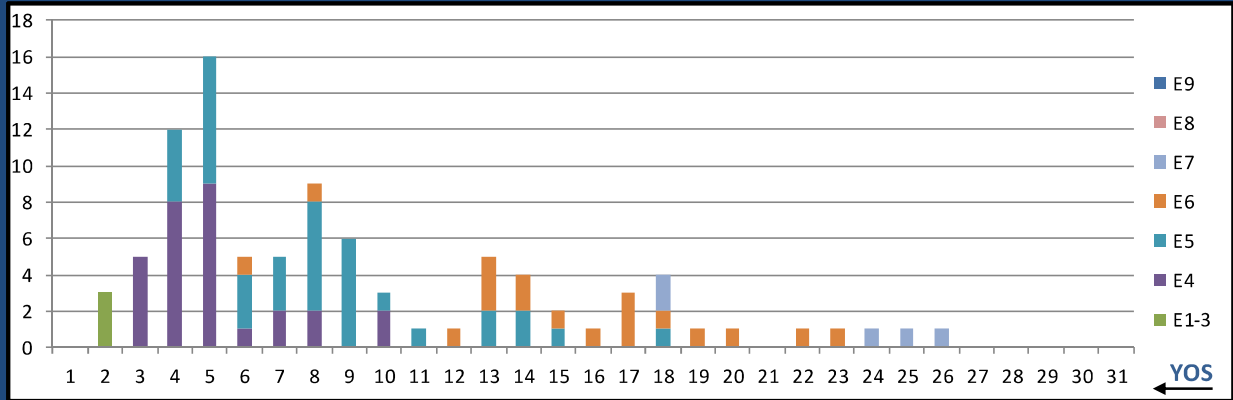
	E1-3	E4	E5	E6	E7	E8	E9	Total
%INV to BA	8%	145%	171%	263%	256%	273%	467%	124%
BA	1,712	1,823	1,130	440	224	66	18	5,413
Total Inventory	140	2,646	1,932	1,156	573	180	84	6,711
SJA Inventory	79%		197%			272%		

L04A AERO MED TECH



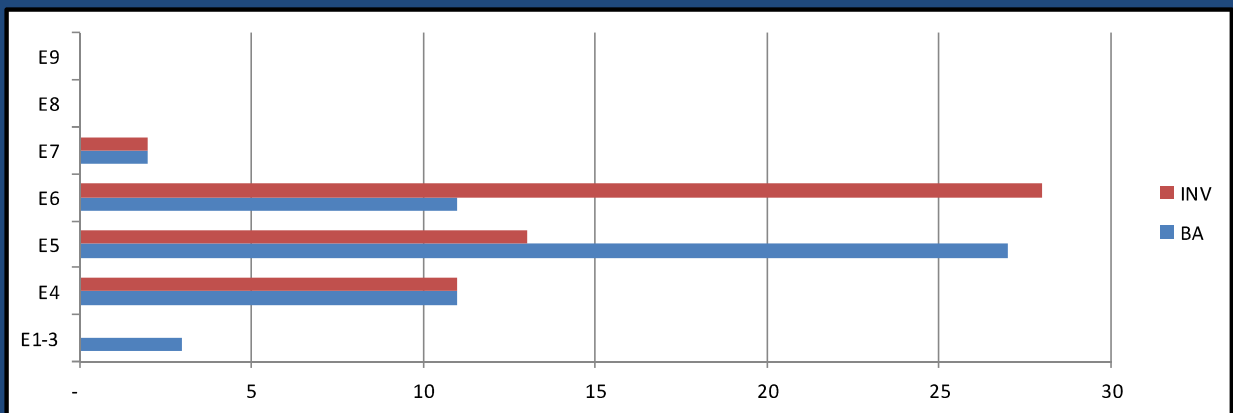
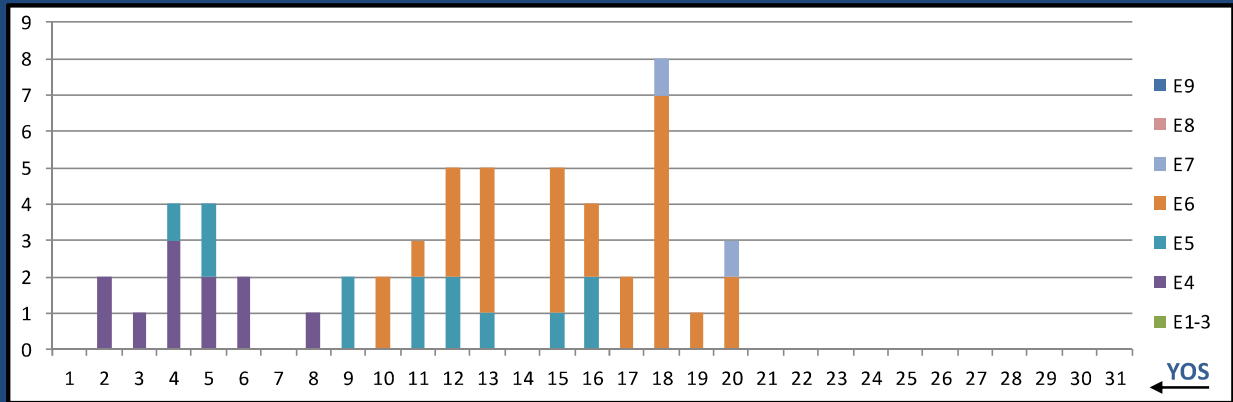
	E1-3	E4	E5	E6	E7	E8	E9	Total
%INV to BA	47%	200%	63%	108%	76%	0%	0%	93%
BA	59	102	291	76	34	-	-	562
Total Inventory	28	204	182	82	26	1	-	523
SJA Inventory	144%		72%			79%		

L05A RAD HLTH TECH



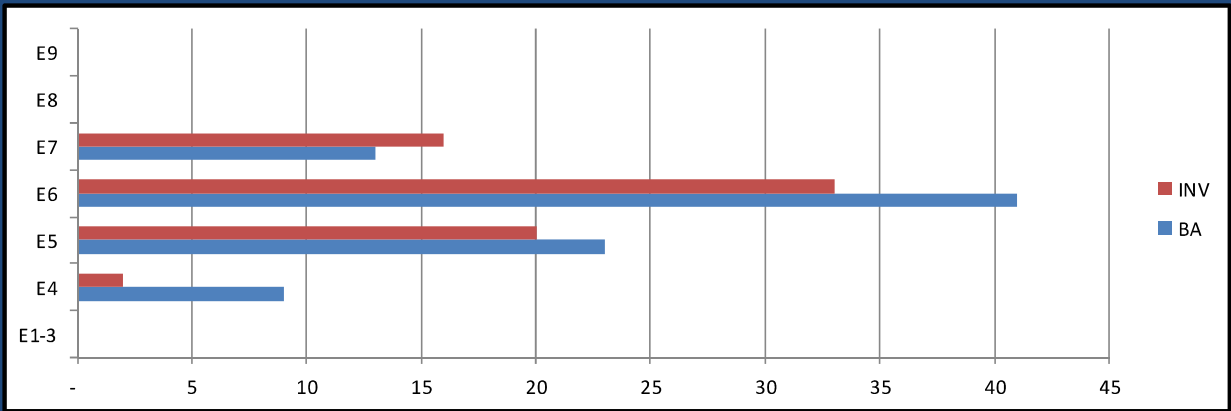
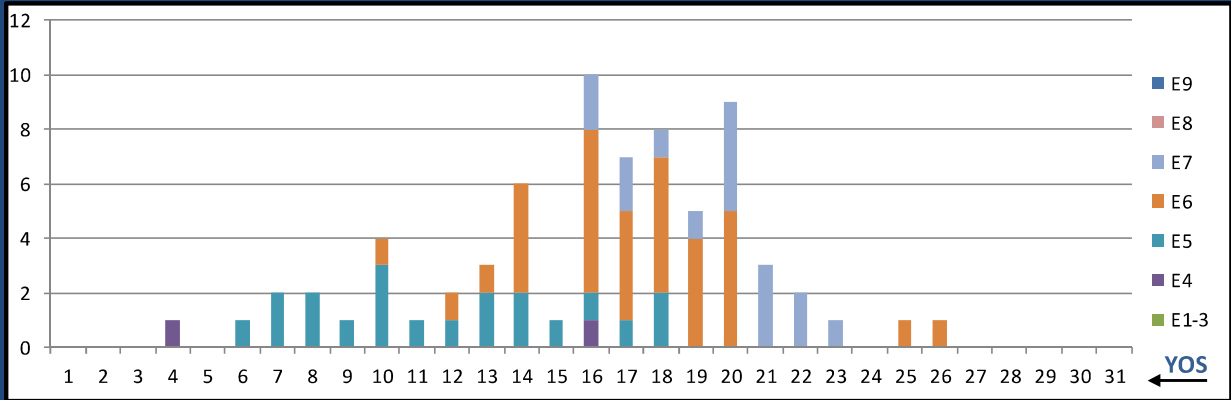
	E1-3	E4	E5	E6	E7	E8	E9	Total
%INV to BA	0%	107%	119%	67%	83%	0%	0%	101%
BA	-	27	31	27	6	-	-	91
Total Inventory	3	29	37	18	5	-	-	92
SJA Inventory	119%		95%		83%			

L06A CV TECH



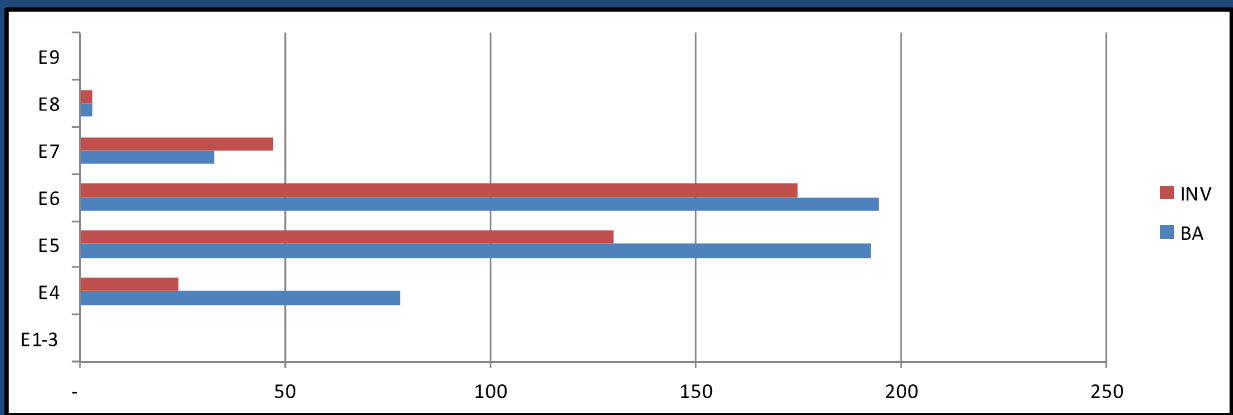
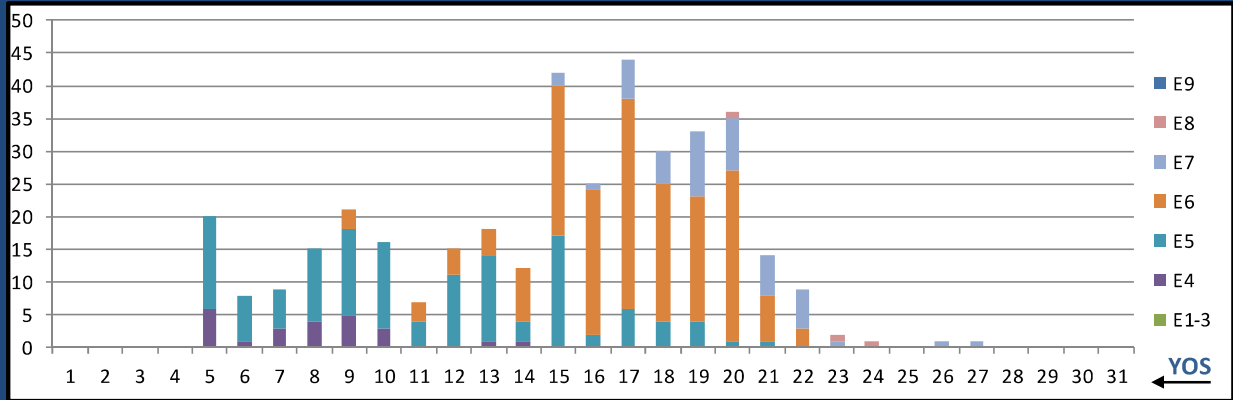
	E1-3	E4	E5	E6	E7	E8	E9	Total
%INV to BA	0%	100%	48%	255%	100%	0%	0%	100%
BA	3	11	27	11	2	-	-	54
Total Inventory	-	11	13	28	2	-	-	54
SJA Inventory	79%		108%		100%			

L07A AERO PHYS TECH



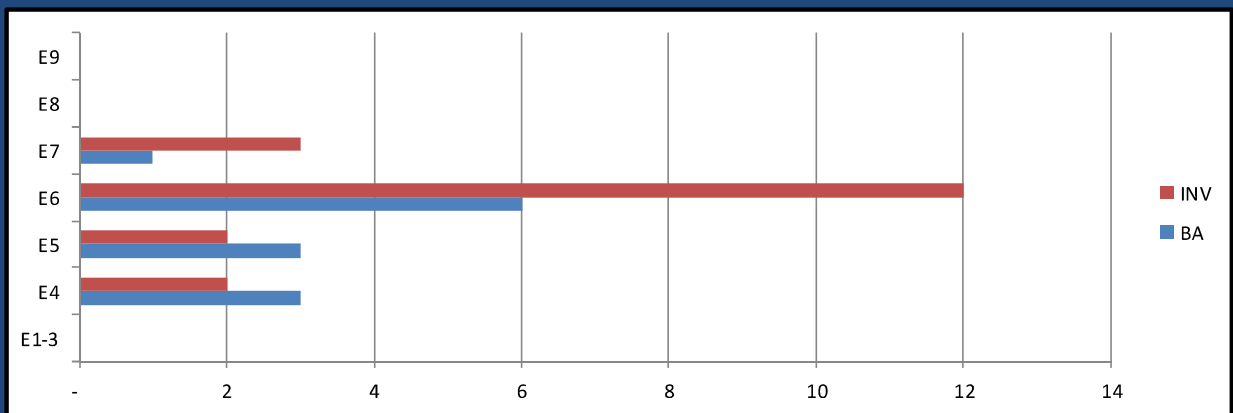
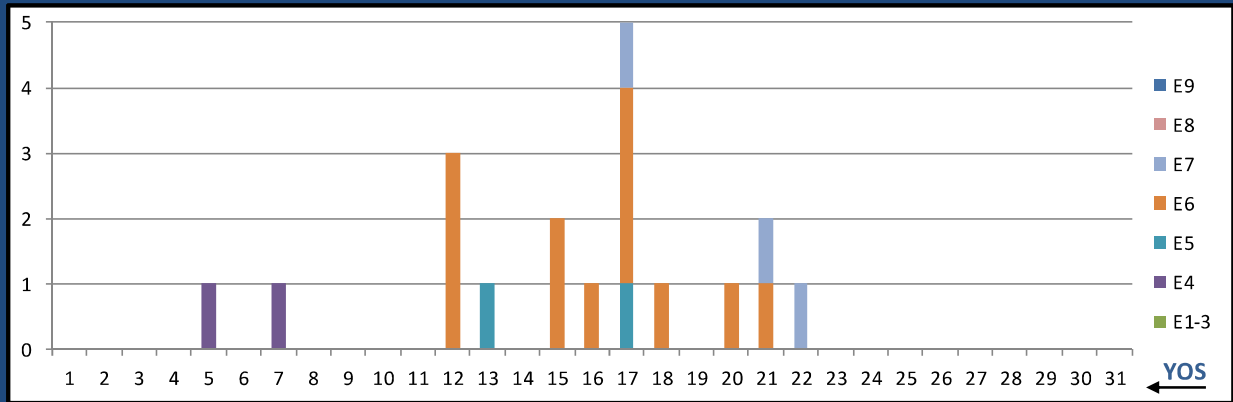
	E1-3	E4	E5	E6	E7	E8	E9	Total
%INV to BA	0%	22%	87%	80%	123%	0%	0%	83%
BA	-	9	23	41	13	-	-	86
Total Inventory	-	2	20	33	16	-	-	71
SJA Inventory	22%		83%		123%			

L08A BIOMED EQ TECH



	E1-3	E4	E5	E6	E7	E8	E9	Total
%INV to BA	0%	31%	67%	90%	142%	100%	0%	75%
BA	-	78	193	195	33	3	-	502
Total Inventory	-	24	130	175	47	3	-	379
SJA Inventory	31%		79%		139%			

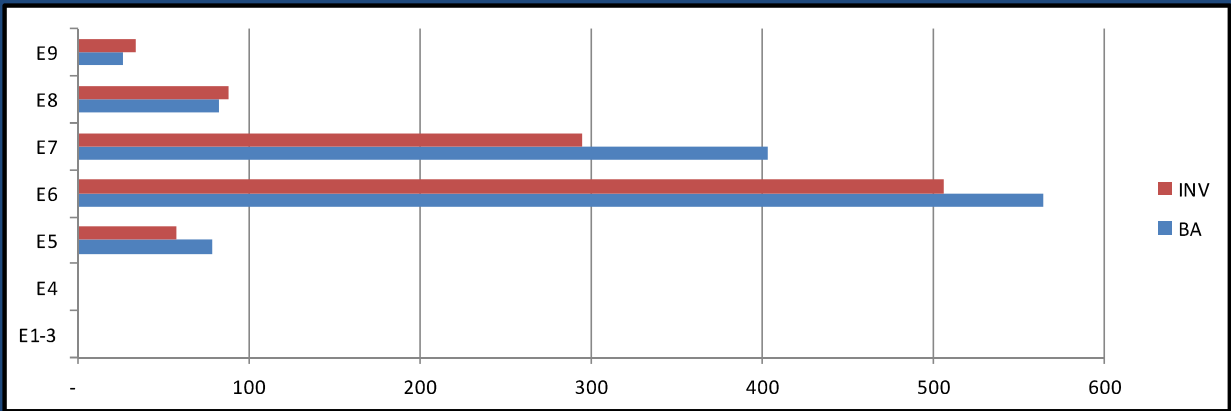
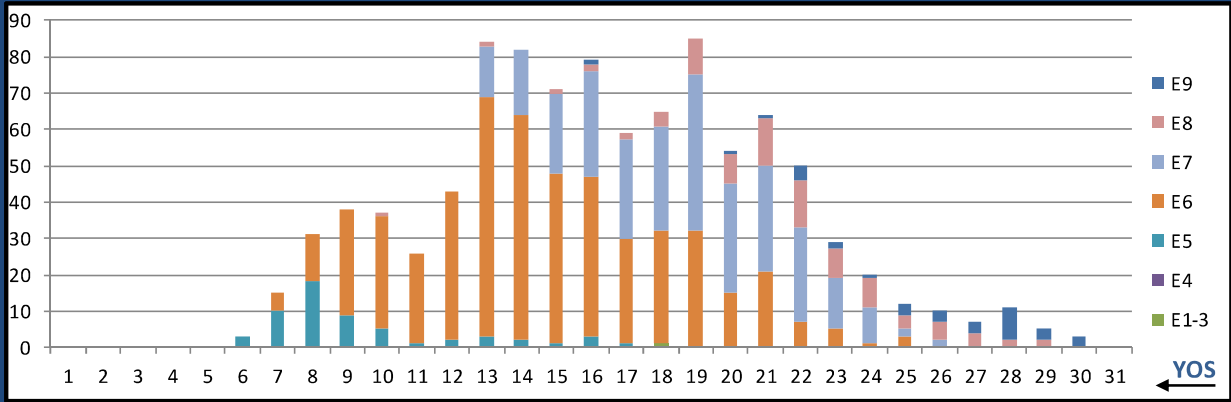
L09A NUC MED TECH



	E1-3	E4	E5	E6	E7	E8	E9	Total
%INV to BA	0%	67%	67%	200%	300%	0%	0%	146%
BA	-	3	3	6	1	-	-	13
Total Inventory	-	2	2	12	3	-	-	19
SJA Inventory	67%		156%		300%			

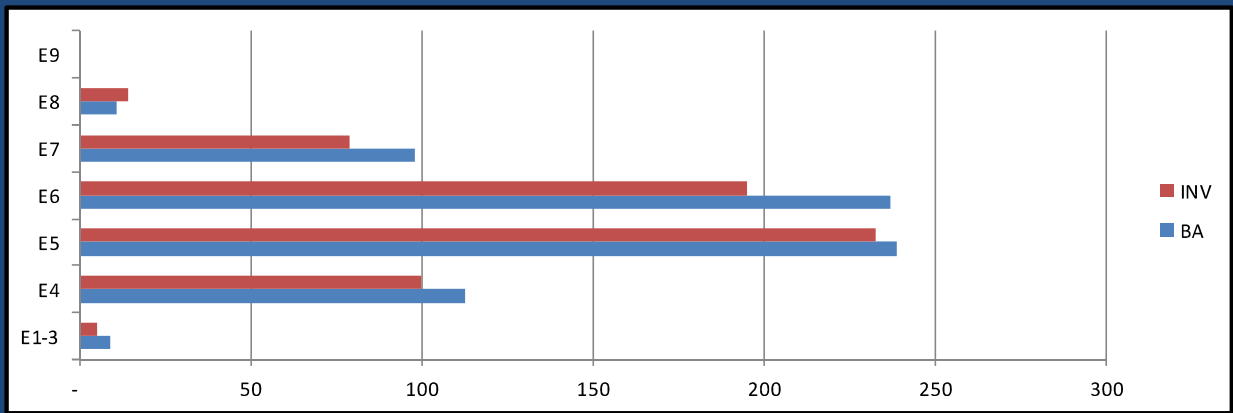
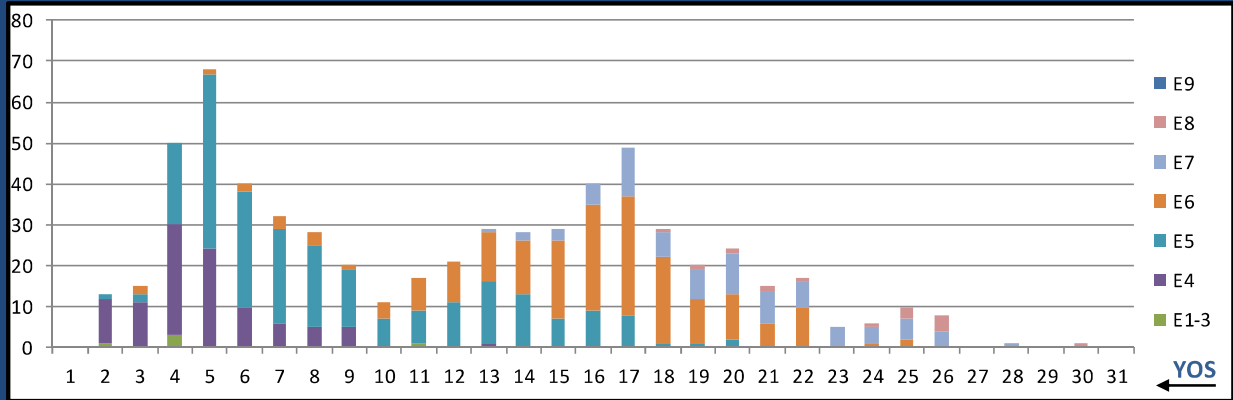
MAY 2026 HM MANNING SNAPSHOT

L10A SURFACE FORCE IDC



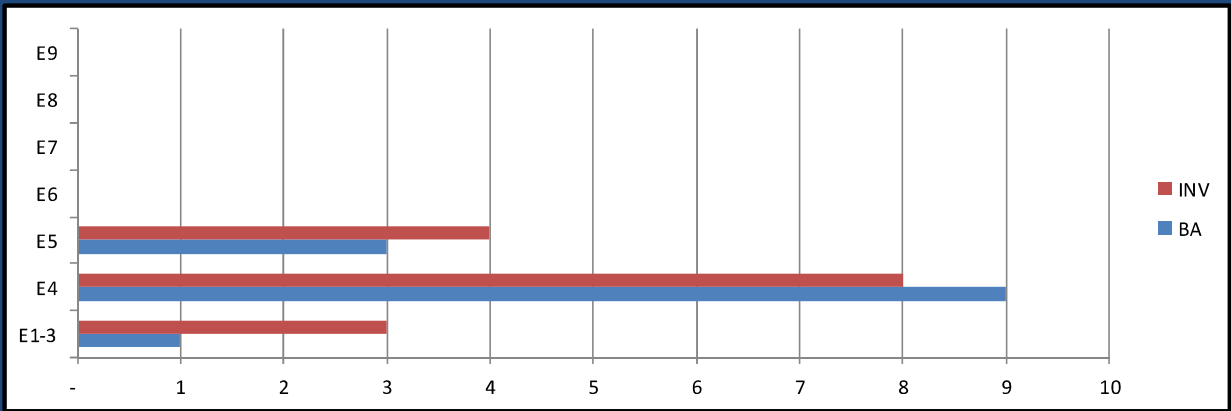
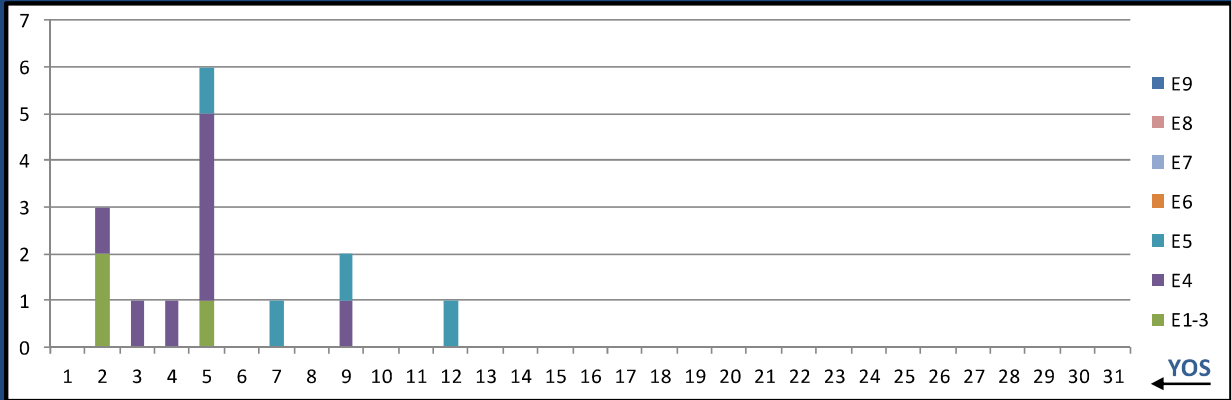
	E1-3	E4	E5	E6	E7	E8	E9	Total
%INV to BA	0%	0%	73%	90%	73%	106%	126%	85%
BA	-	-	79	565	404	83	27	1,158
Total Inventory	1	-	58	507	295	88	34	983
SJA Inventory	#DIV/0!		88%		81%			

L12A PREV MED TECH



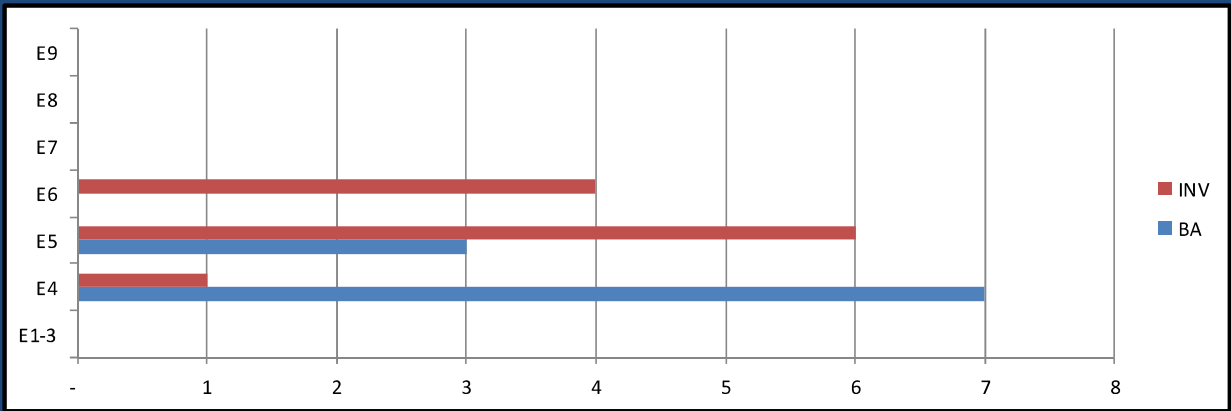
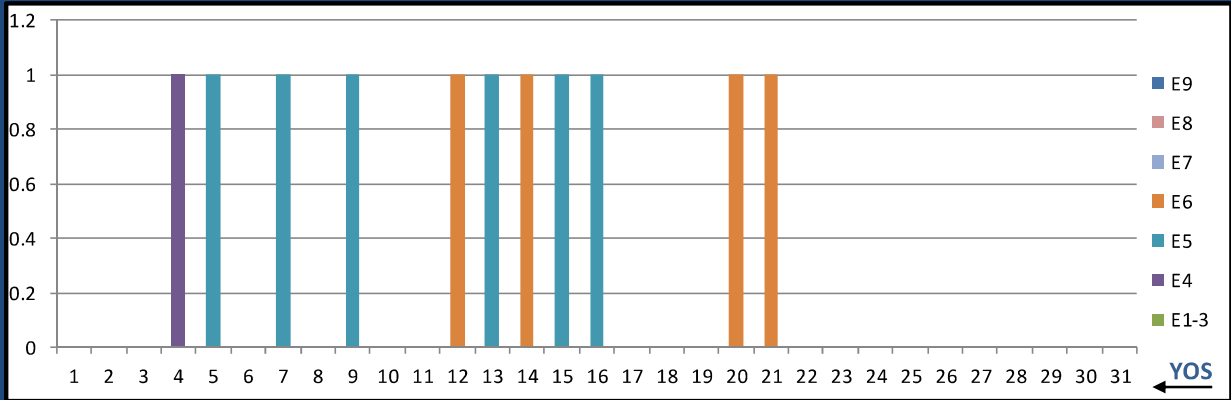
	E1-3	E4	E5	E6	E7	E8	E9	Total
%INV to BA	56%	88%	97%	82%	81%	127%	0%	89%
BA	9	113	239	237	98	11	-	707
Total Inventory	5	100	233	195	79	14	-	626
SJA Inventory	86%		90%		85%			

L13A HEMO TECH



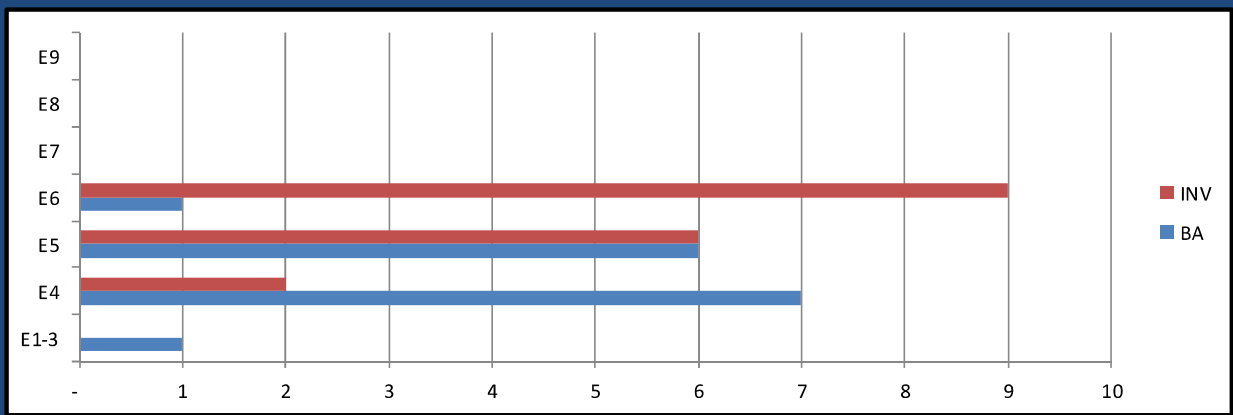
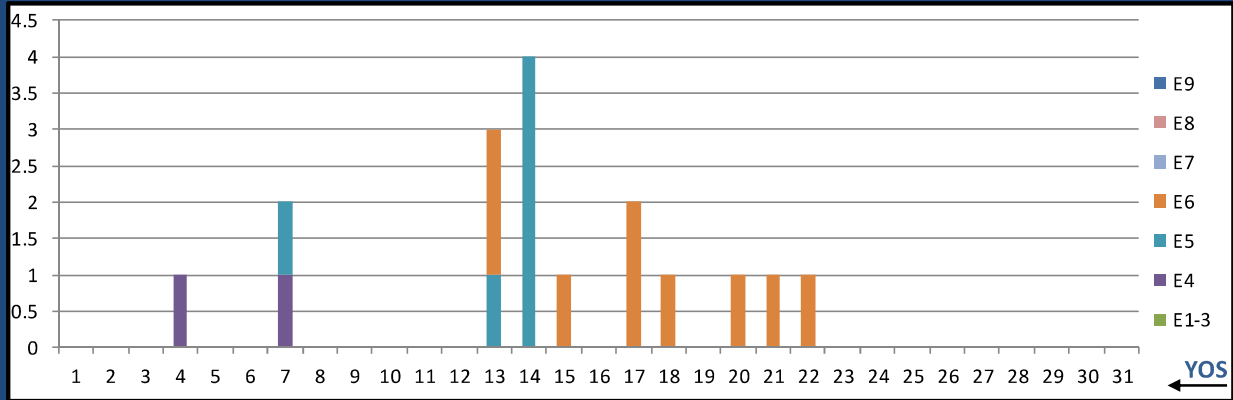
	E1-3	E4	E5	E6	E7	E8	E9	Total
%INV to BA	300%	89%	133%	0%	0%	0%	0%	115%
BA	1	9	3	-	-	-	-	13
Total Inventory	3	8	4	-	-	-	-	15
SJA Inventory	110%		133%			#DIV/0!		

L14A OPTH SURG TECH



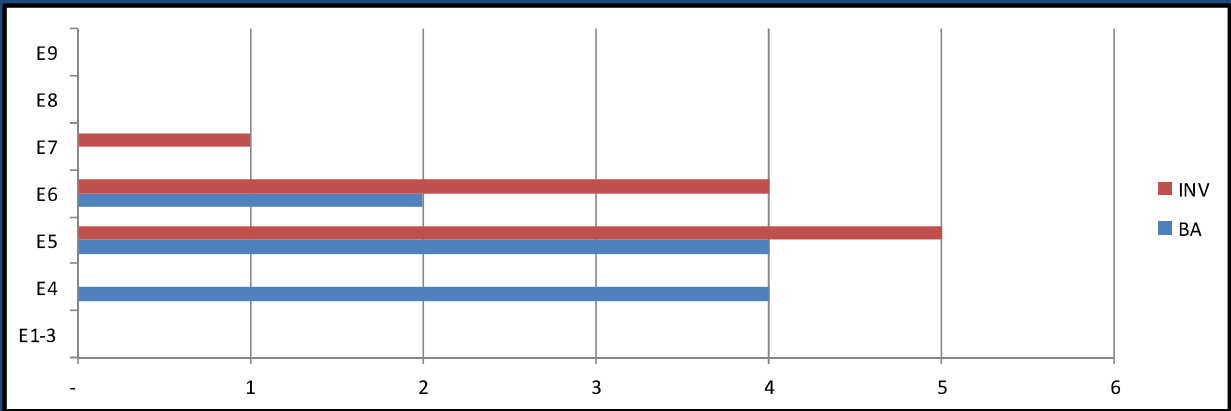
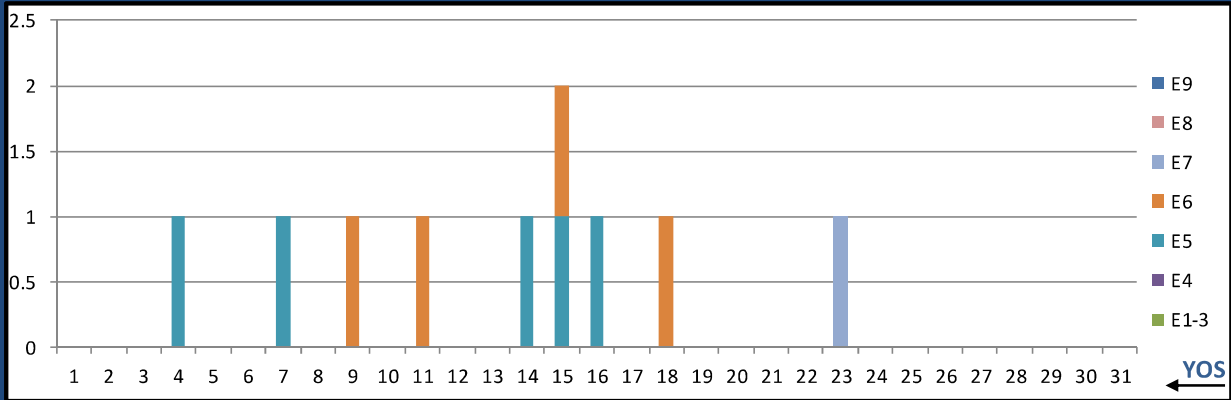
	E1-3	E4	E5	E6	E7	E8	E9	Total
%INV to BA	0%	14%	200%	0%	0%	0%	0%	110%
BA	-	7	3	-	-	-	-	10
Total Inventory	-	1	6	4	-	-	-	11
SJA Inventory	14%		333%		#DIV/0!			

L15A ULTRASOUND TECH



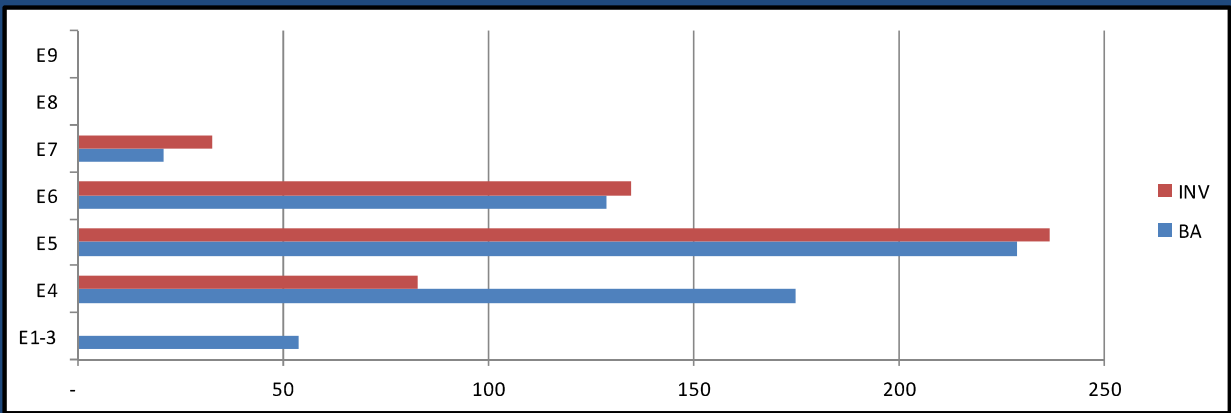
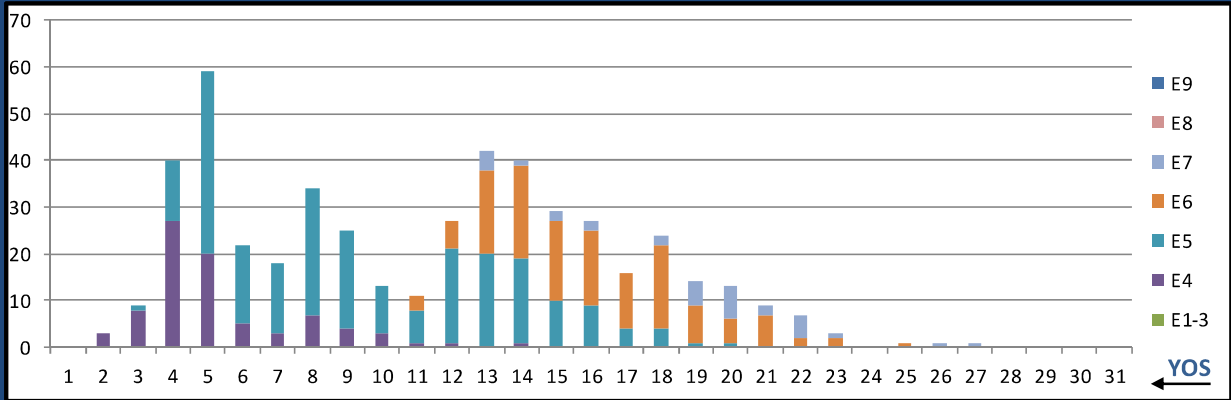
	E1-3	E4	E5	E6	E7	E8	E9	Total
%INV to BA	0%	29%	100%	900%	0%	0%	0%	113%
BA	1	7	6	1	-	-	-	15
Total Inventory	-	2	6	9	-	-	-	17
SJA Inventory	25%		214%		#DIV/0!			

L16A MAMMO TECH



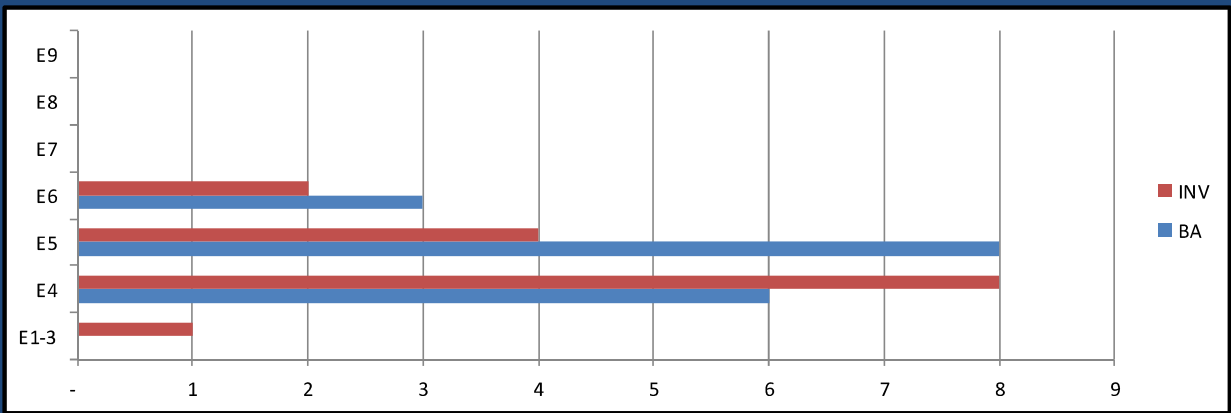
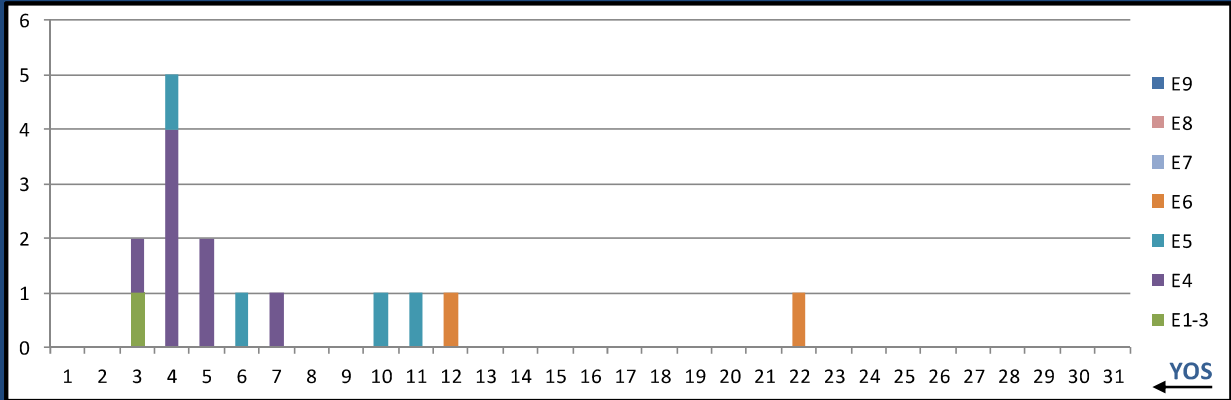
	E1-3	E4	E5	E6	E7	E8	E9	Total
%INV to BA	0%	0%	125%	200%	0%	0%	0%	100%
BA	-	4	4	2	-	-	-	10
Total Inventory	-	-	5	4	1	-	-	10
SJA Inventory	0%		150%		#DIV/0!			

L17A ADV X-RAY TECH



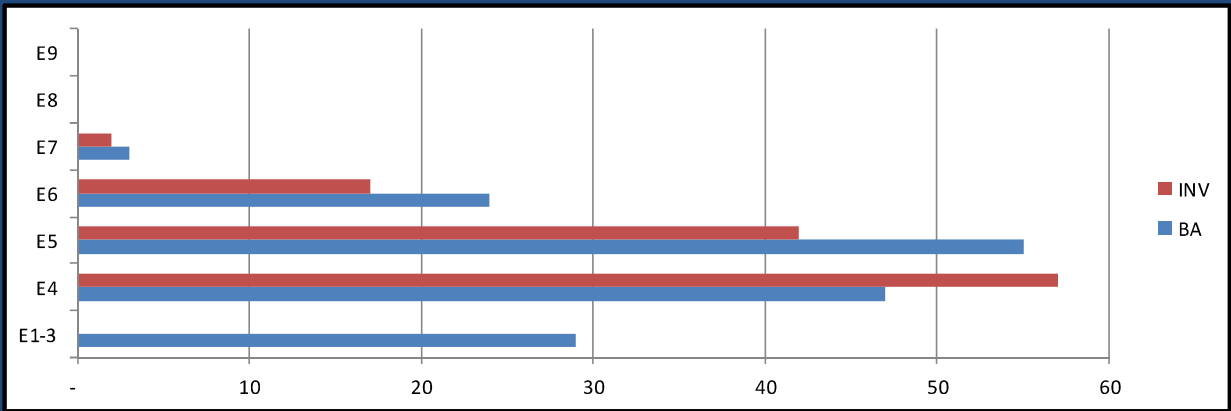
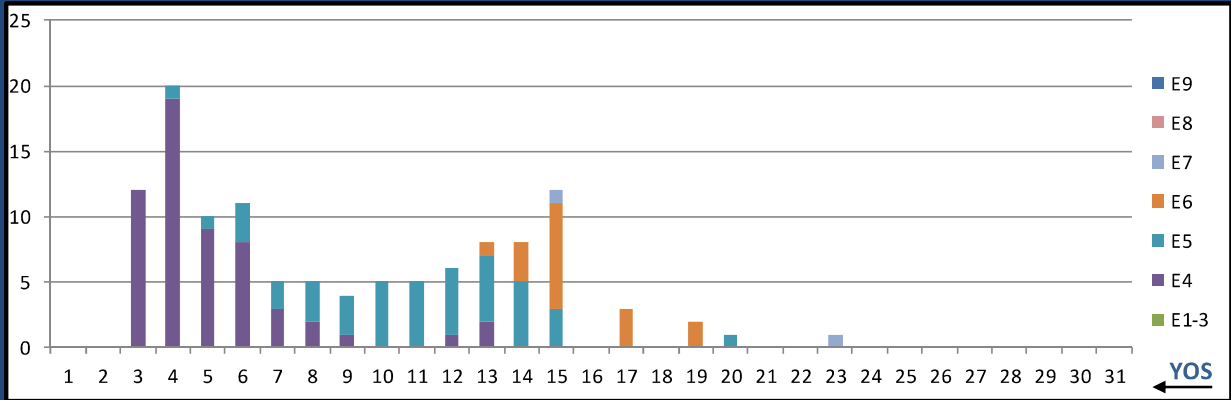
	E1-3	E4	E5	E6	E7	E8	E9	Total
%INV to BA	0%	47%	103%	105%	157%	0%	0%	80%
BA	54	175	229	129	21	-	-	608
Total Inventory	-	83	237	135	33	-	-	488
SJA Inventory	36%		104%		157%			

L18A END TECH



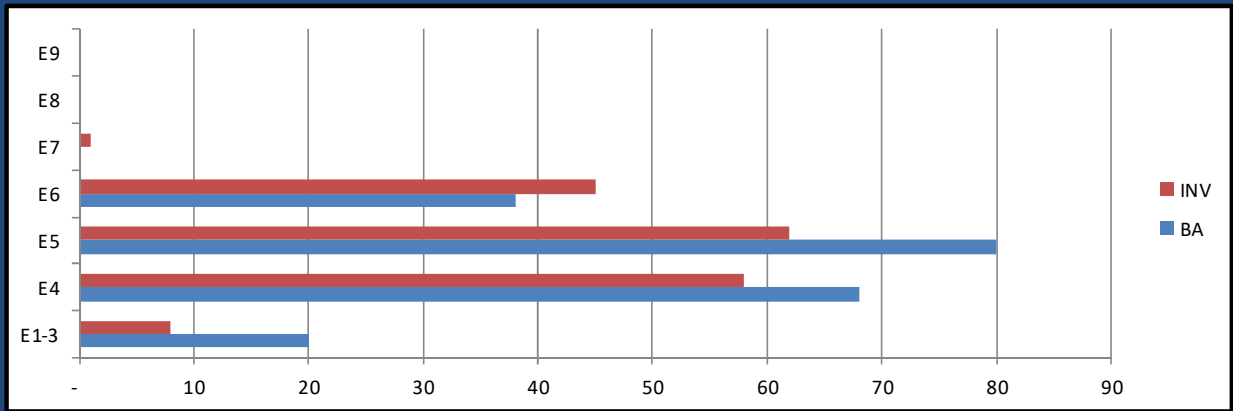
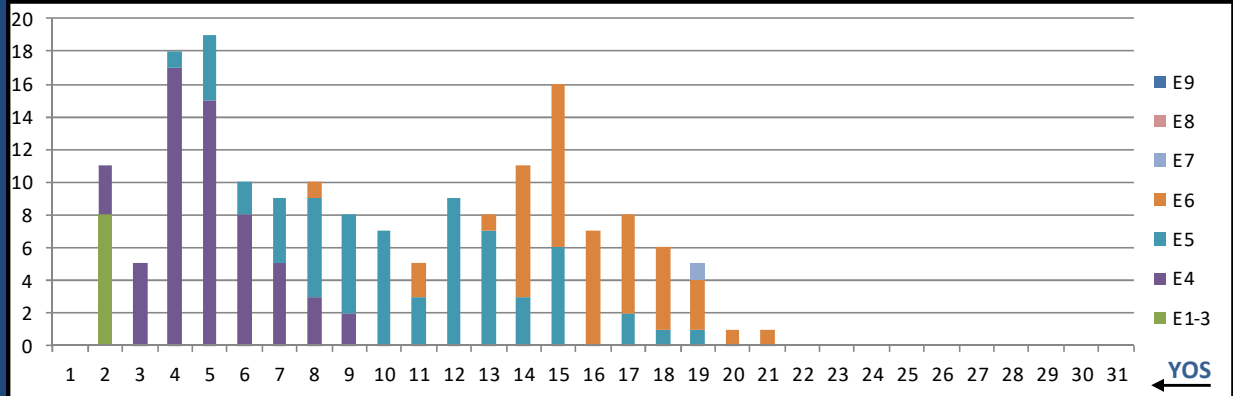
	E1-3	E4	E5	E6	E7	E8	E9	Total
%INV to BA	0%	133%	50%	67%	0%	0%	0%	88%
BA	-	6	8	3	-	-	-	17
Total Inventory	1	8	4	2	-	-	-	15
SJA Inventory	150%	55%		#DIV/0!				

L19A OPTICIAN



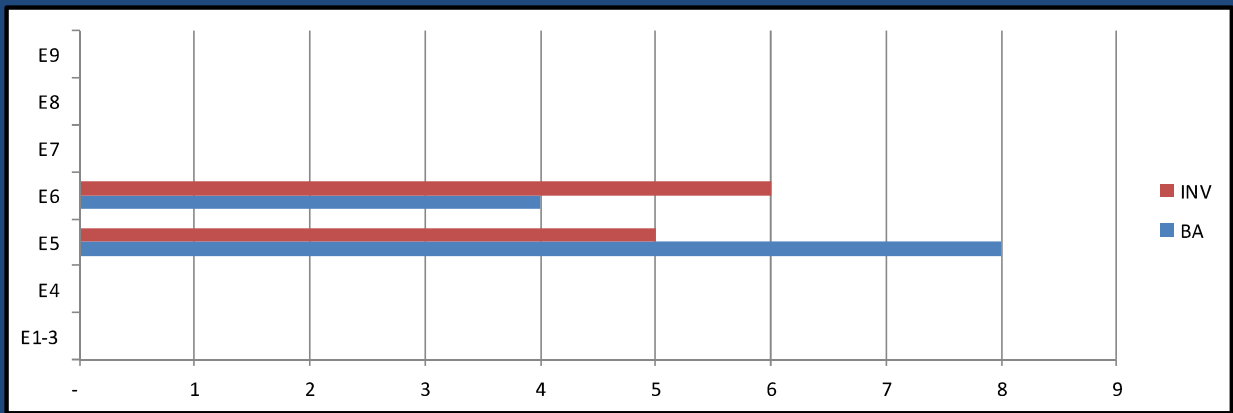
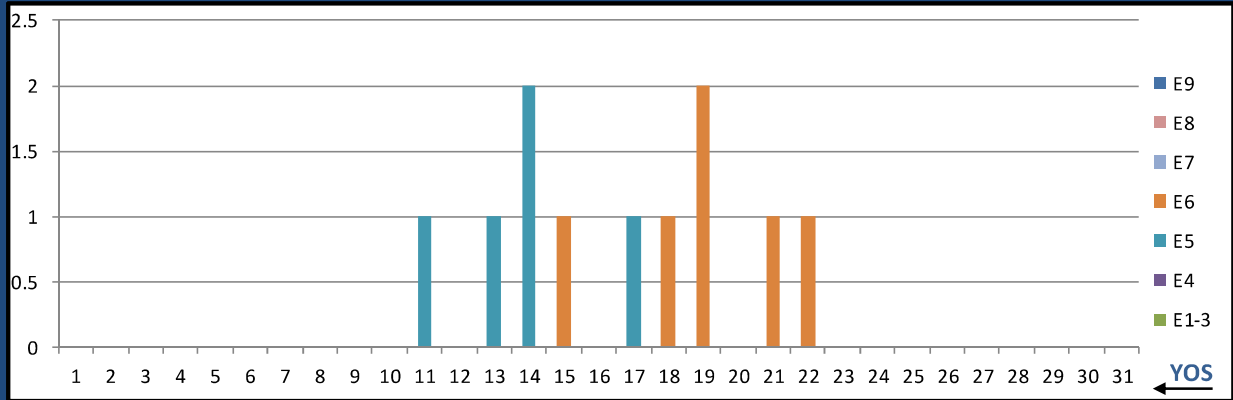
	E1-3	E4	E5	E6	E7	E8	E9	Total
%INV to BA	0%	121%	76%	71%	67%	0%	0%	75%
BA	29	47	55	24	3	-	-	158
Total Inventory	-	57	42	17	2	-	-	118
SJA Inventory	75%		75%		67%			

L20A PT TECH



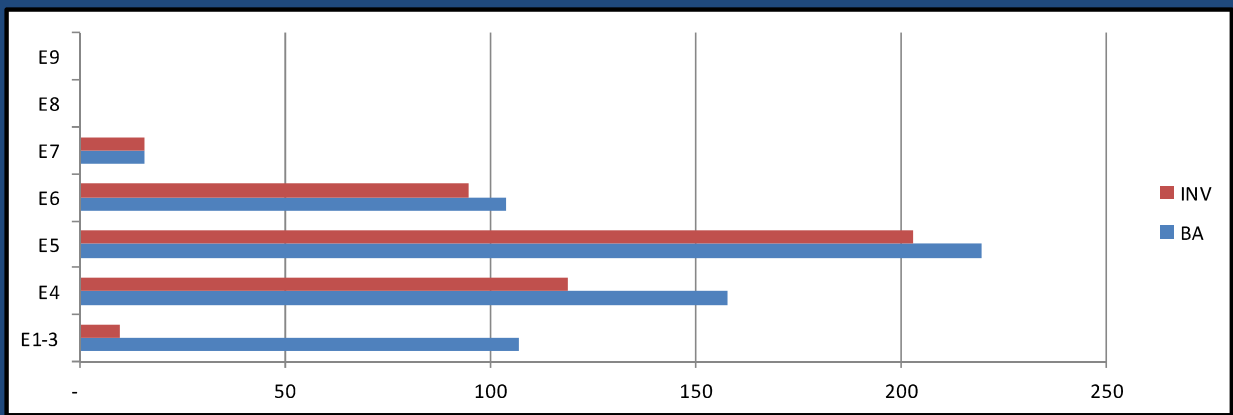
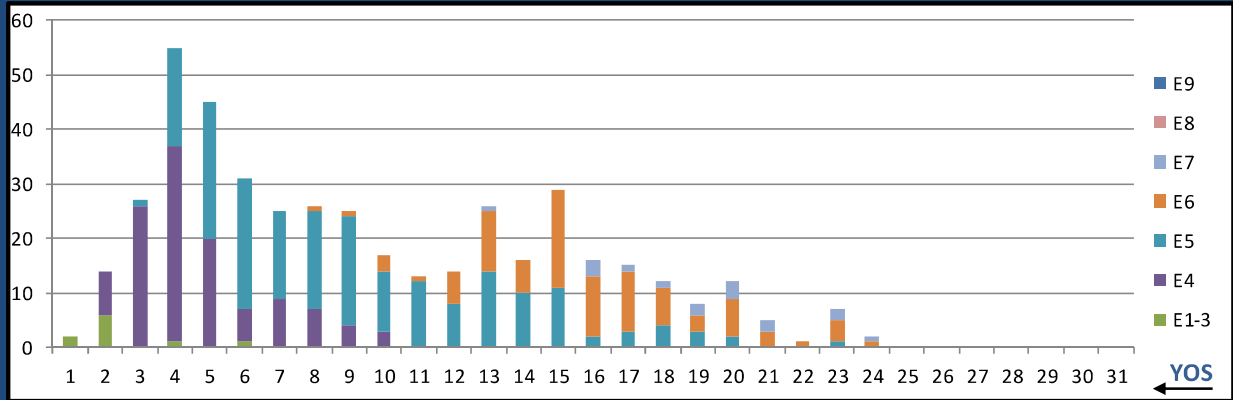
	E1-3	E4	E5	E6	E7	E8	E9	Total
%INV to BA	40%	85%	78%	118%	0%	0%	0%	84%
BA	20	68	80	38	-	-	-	206
Total Inventory	8	58	62	45	1	-	-	174
SJA Inventory	75%		91%			#DIV/0!		

L21A OT TECH



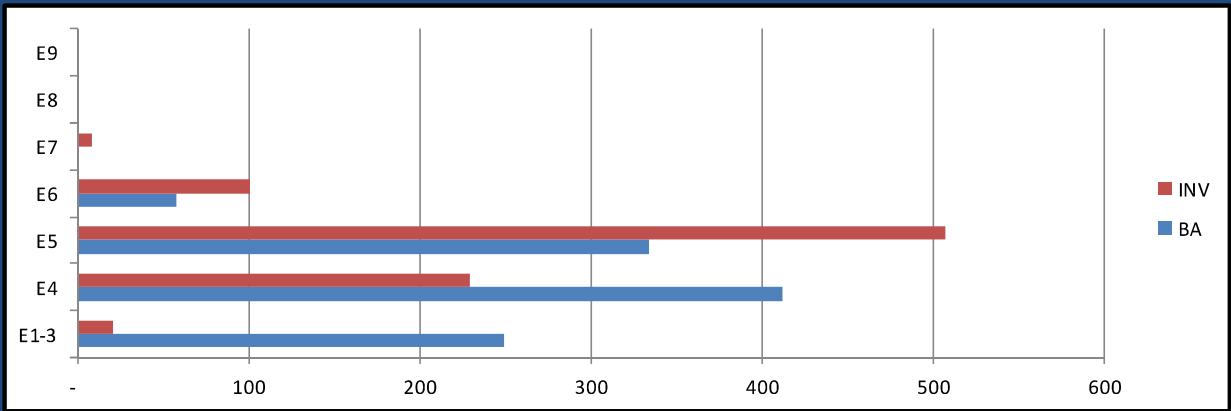
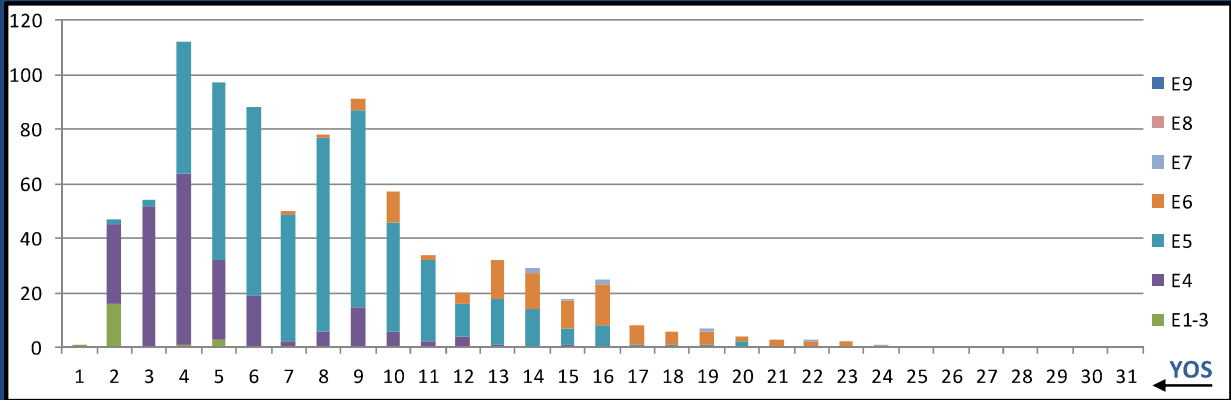
	E1-3	E4	E5	E6	E7	E8	E9	Total
%INV to BA	0%	0%	63%	150%	0%	0%	0%	92%
BA	-	-	8	4	-	-	-	12
Total Inventory	-	-	5	6	-	-	-	11
SJA Inventory	#DIV/0!		92%		#DIV/0!			

L22A PHARM TECH



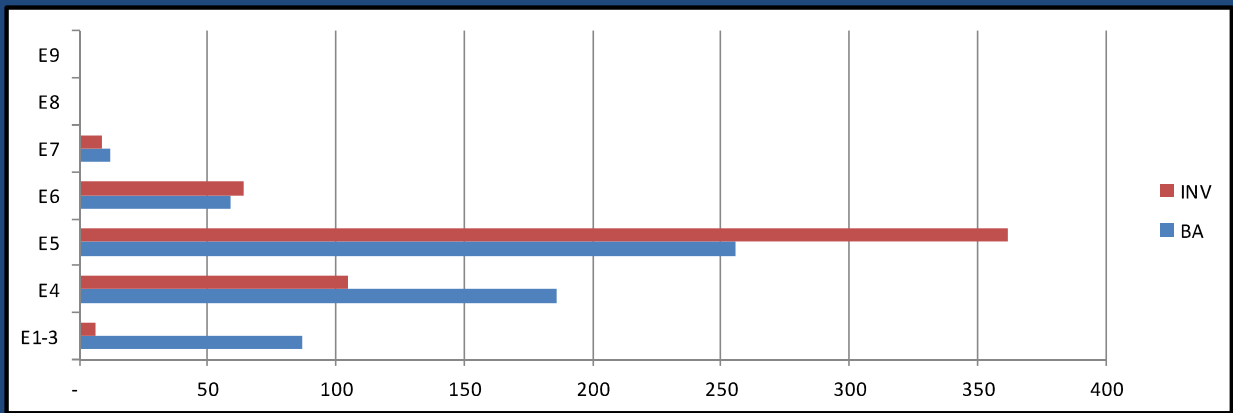
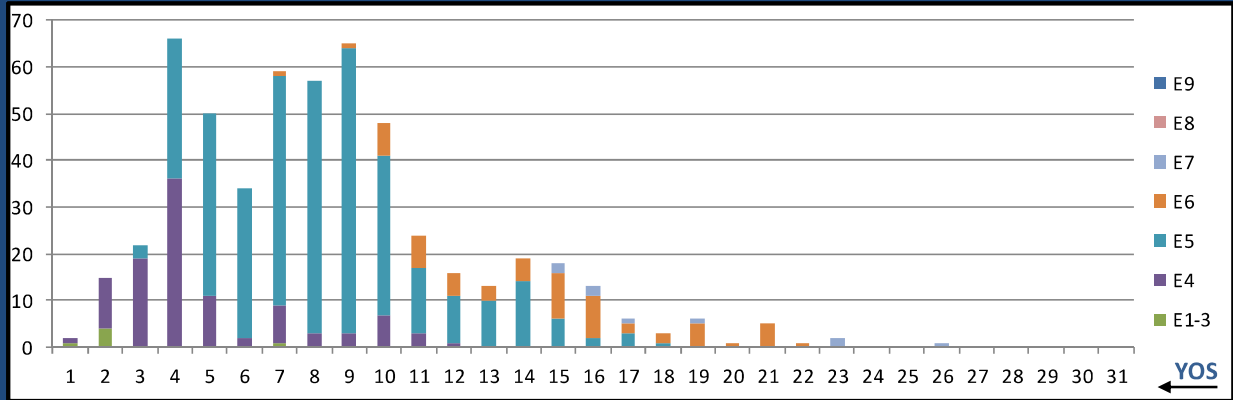
	E1-3	E4	E5	E6	E7	E8	E9	Total
%INV to BA	9%	75%	92%	91%	100%	0%	0%	73%
BA	107	158	220	104	16	-	-	605
Total Inventory	10	119	203	95	16	-	-	443
SJA Inventory	49%		92%		100%			

L23A SURG TECH



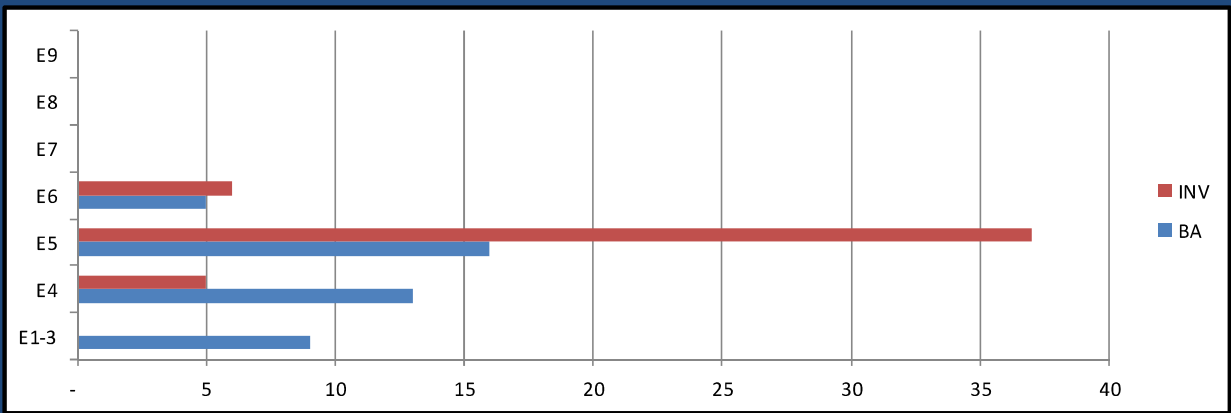
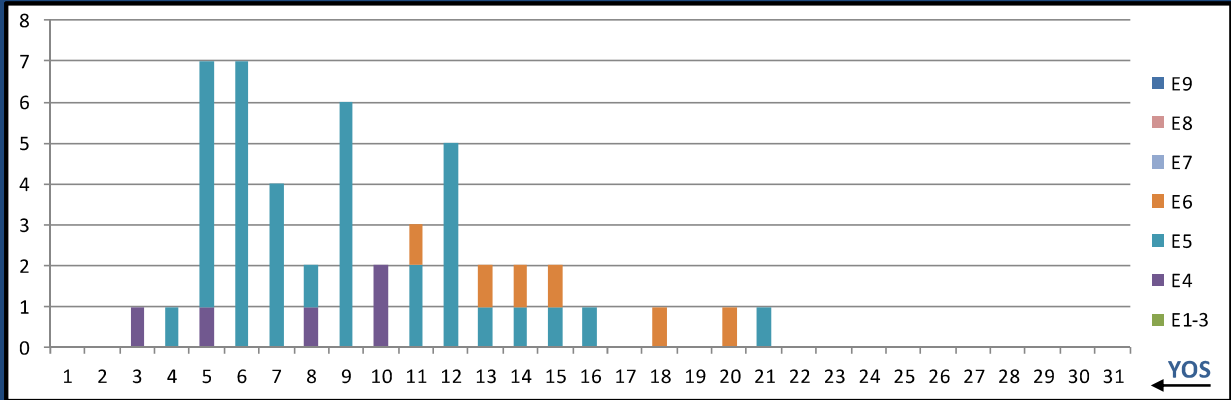
	E1-3	E4	E5	E6	E7	E8	E9	Total
%INV to BA	8%	56%	152%	174%	0%	0%	0%	82%
BA	249	412	334	58	-	-	-	1,053
Total Inventory	21	229	508	101	8	-	-	867
SJA Inventory	38%		155%		#DIV/0!			

L24A MENTAL HLTH



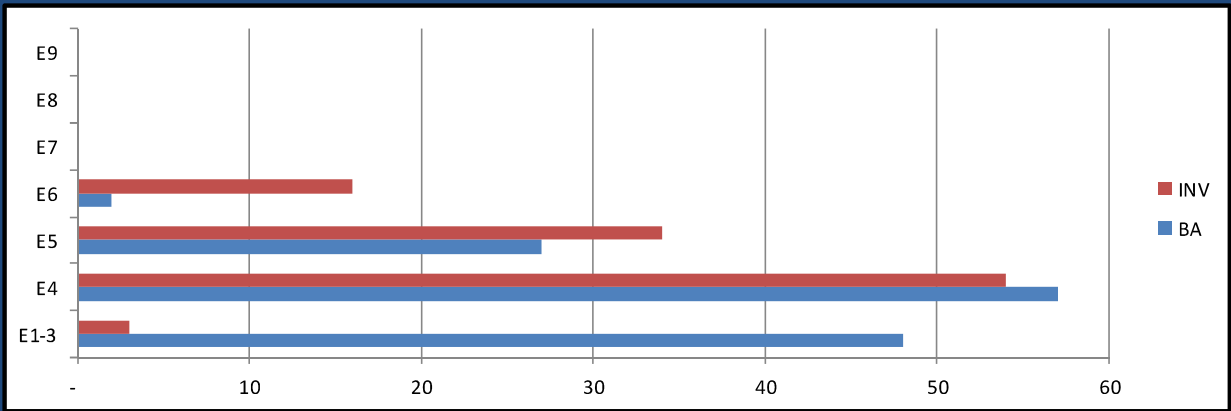
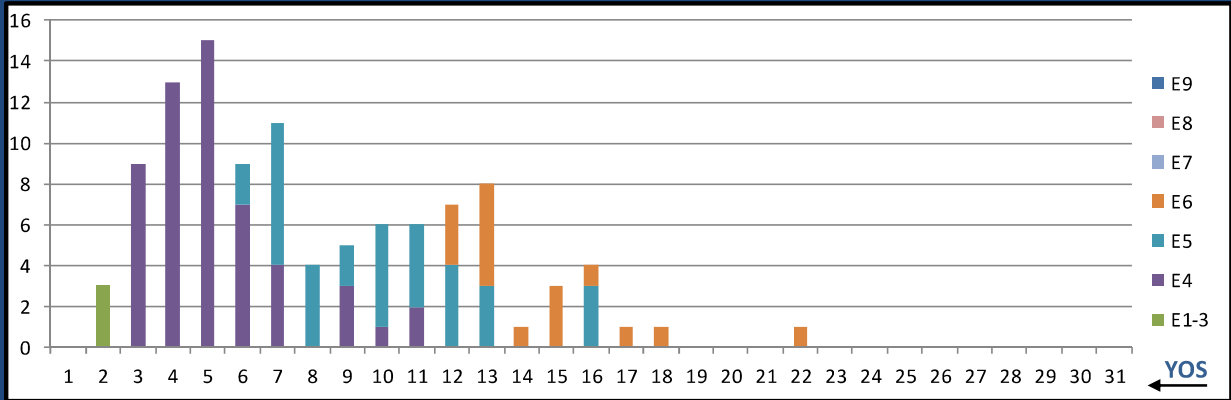
	E1-3	E4	E5	E6	E7	E8	E9	Total
%INV to BA	7%	56%	141%	108%	75%	0%	0%	91%
BA	87	186	256	59	12	-	-	600
Total Inventory	6	105	362	64	9	-	-	546
SJA Inventory	41%		135%		75%			

L25A UROLOGY TECH



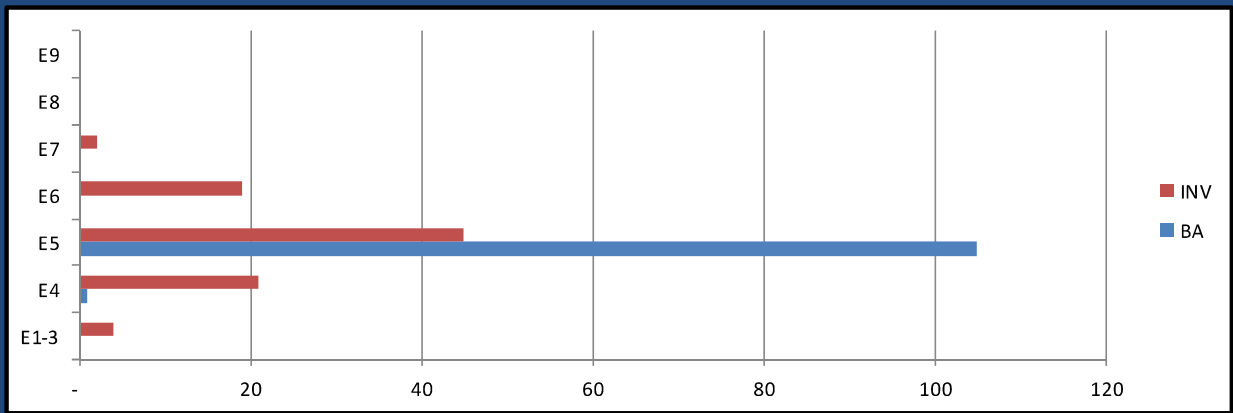
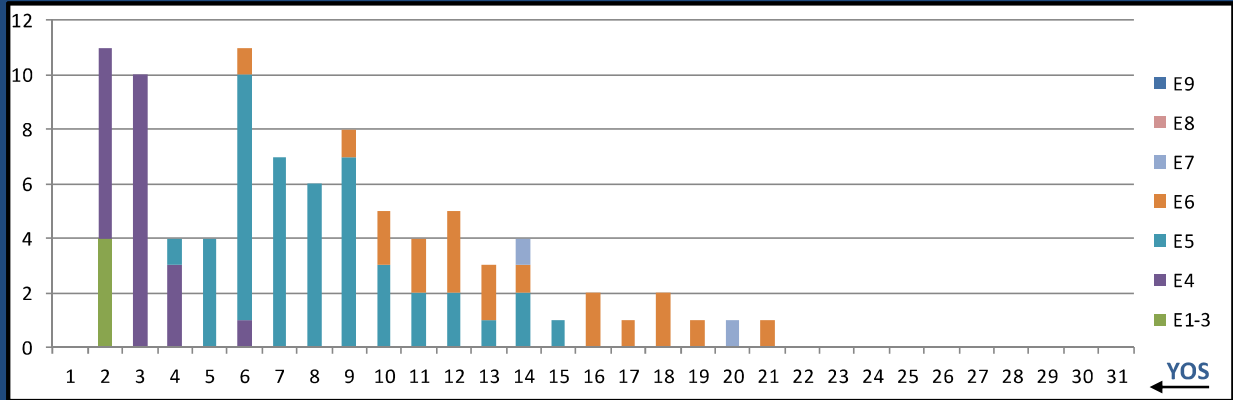
	E1-3	E4	E5	E6	E7	E8	E9	Total
%INV to BA	0%	38%	231%	120%	0%	0%	0%	112%
BA	9	13	16	5	-	-	-	43
Total Inventory	-	5	37	6	-	-	-	48
SJA Inventory	23%		205%			#DIV/0!		

L26A ORTHOPEDIC TECH



	E1-3	E4	E5	E6	E7	E8	E9	Total
%INV to BA	6%	95%	126%	800%	0%	0%	0%	80%
BA	48	57	27	2	-	-	-	134
Total Inventory	3	54	34	16	-	-	-	107
SJA Inventory	54%		172%		#DIV/0!			

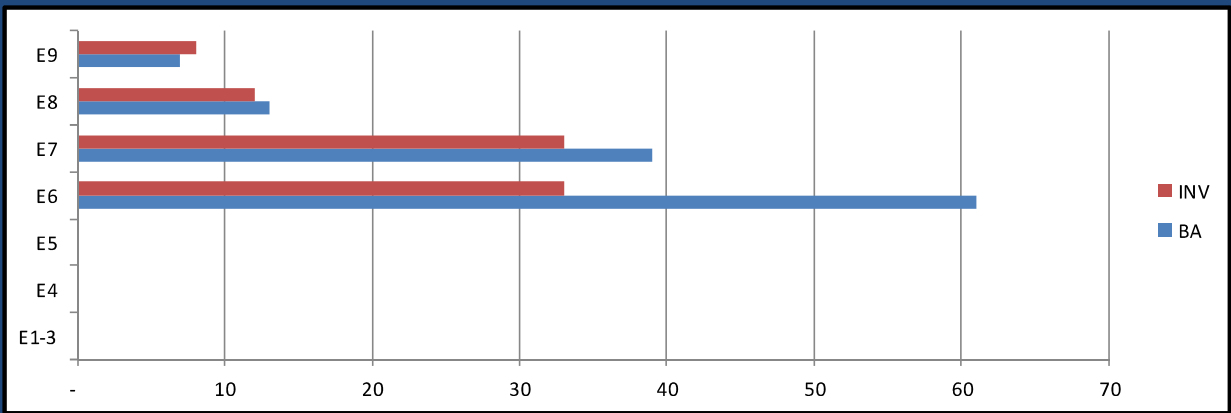
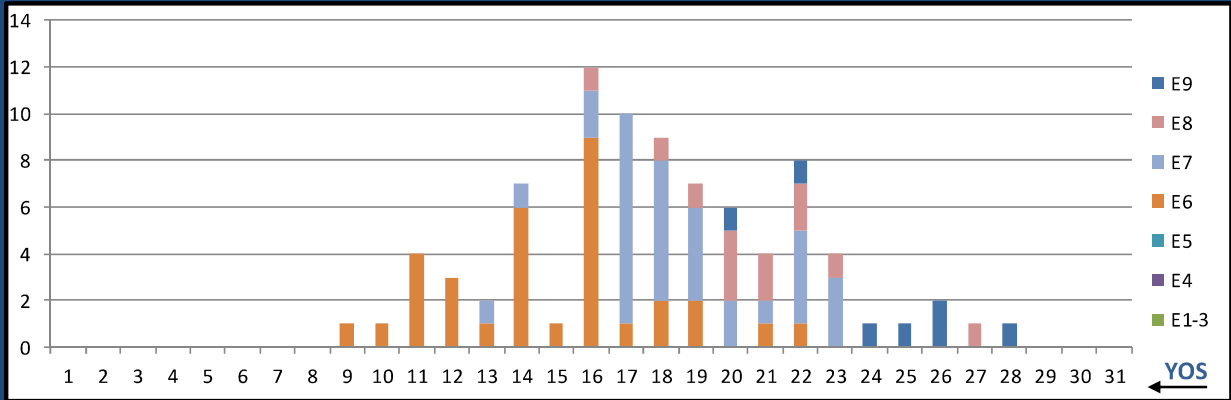
L27A DIVE MED TECH



	E1-3	E4	E5	E6	E7	E8	E9	Total
%INV to BA	0%	2100%	43%	0%	0%	0%	0%	86%
BA	-	1	105	-	-	-	-	106
Total Inventory	4	21	45	19	2	-	-	91
SJA Inventory	2500%		61%			#DIV/0!		

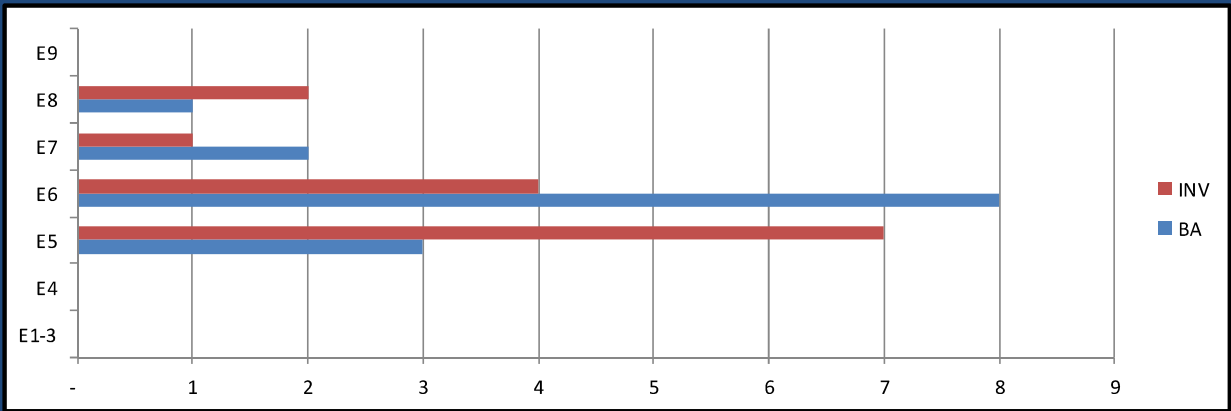
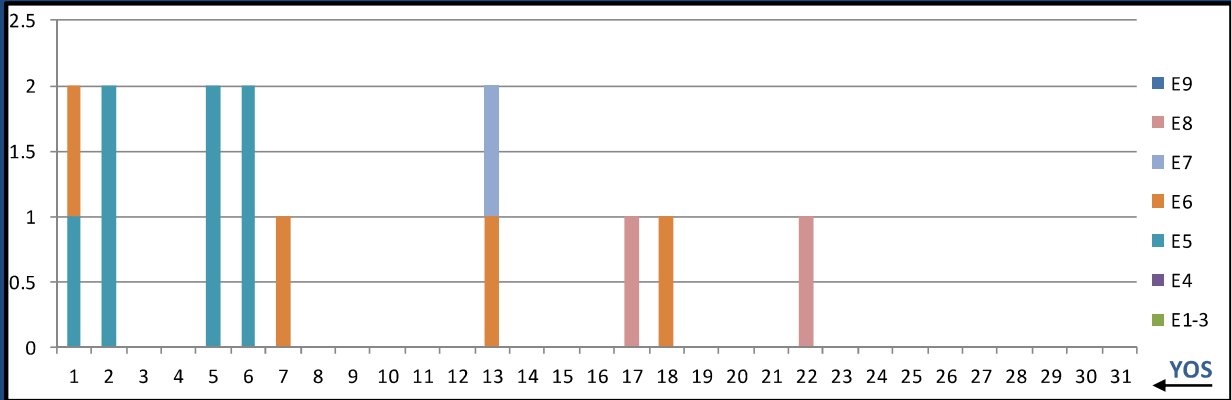
MAY 2026 HM MANNING SNAPSHOT

L28A DIVE IDC



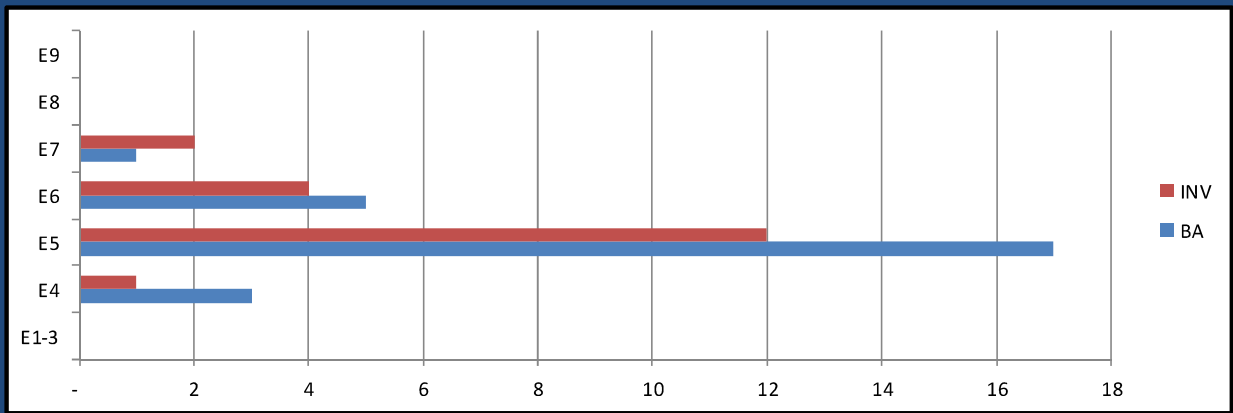
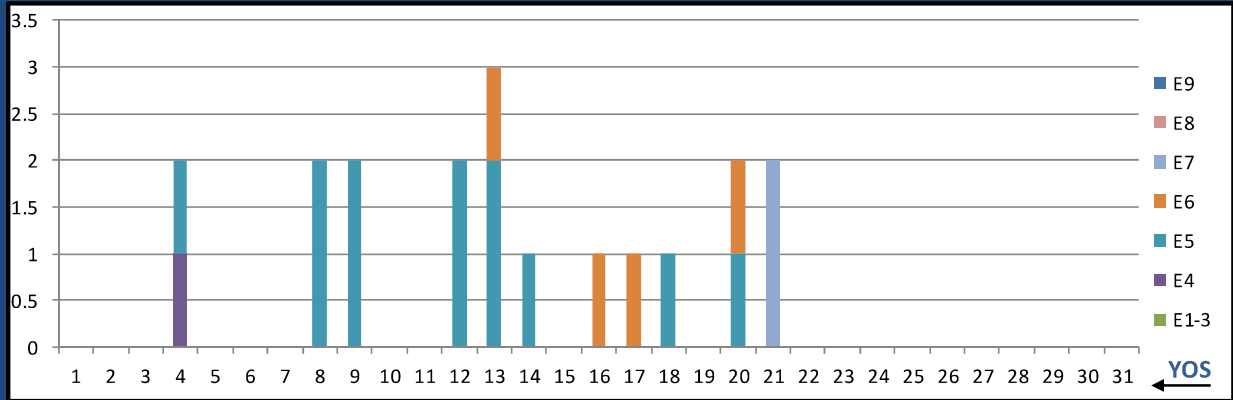
	E1-3	E4	E5	E6	E7	E8	E9	Total
%INV to BA	0%	0%	0%	54%	85%	92%	114%	72%
BA	-	-	-	61	39	13	7	120
Total Inventory	-	-	-	33	33	12	8	86
SJA Inventory	#DIV/0!		54%		90%			

L29A MORTICIAN



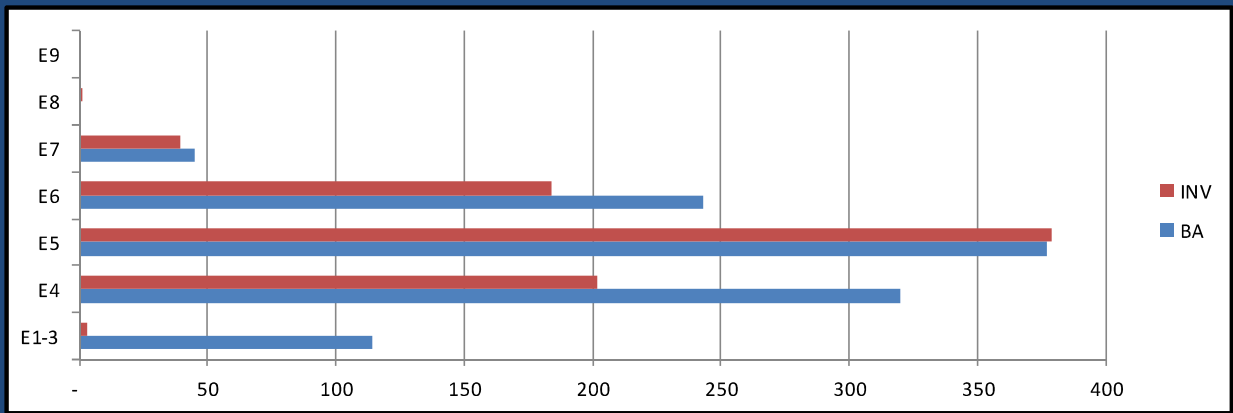
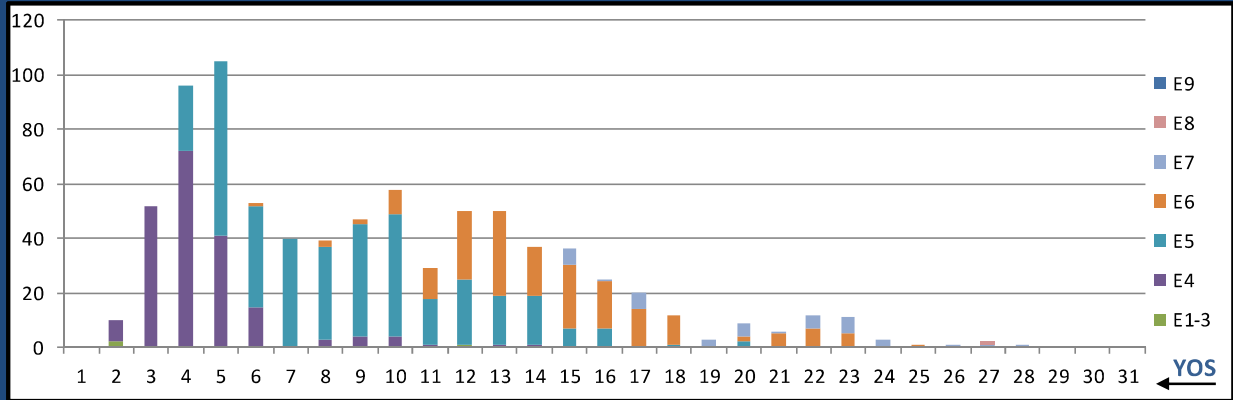
	E1-3	E4	E5	E6	E7	E8	E9	Total
%INV to BA	0%	0%	233%	50%	50%	200%	0%	100%
BA	-	-	3	8	2	1	-	14
Total Inventory	-	-	7	4	1	2	-	14
SJA Inventory	#DIV/0!		100%		100%			

L30A HISTO TECH



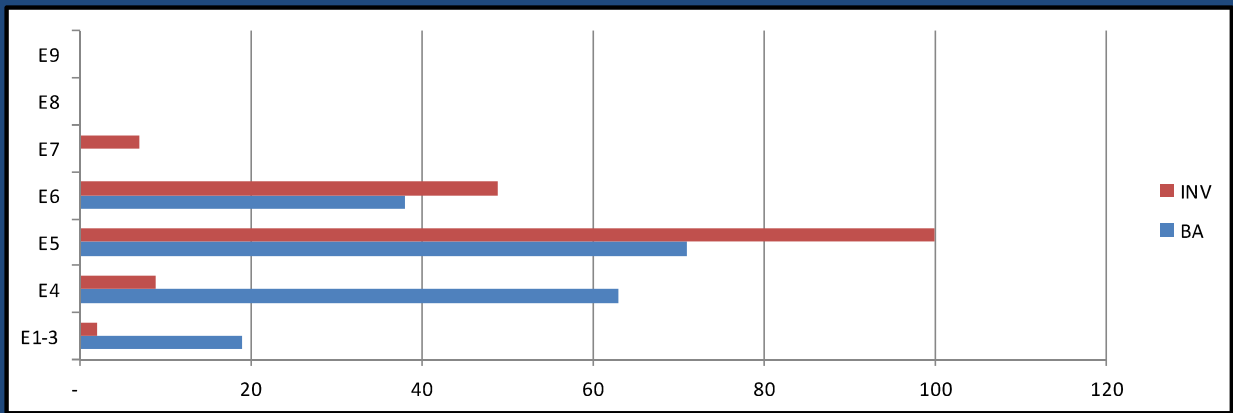
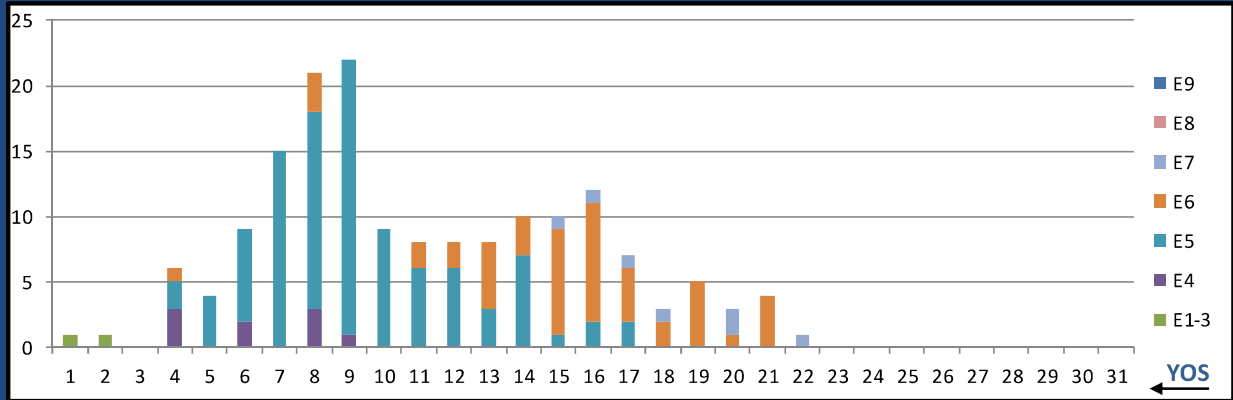
	E1-3	E4	E5	E6	E7	E8	E9	Total
%INV to BA	0%	33%	71%	80%	200%	0%	0%	73%
BA	-	3	17	5	1	-	-	26
Total Inventory	-	1	12	4	2	-	-	19
SJA Inventory	33%		73%			200%		

L31A MED LAB TECH



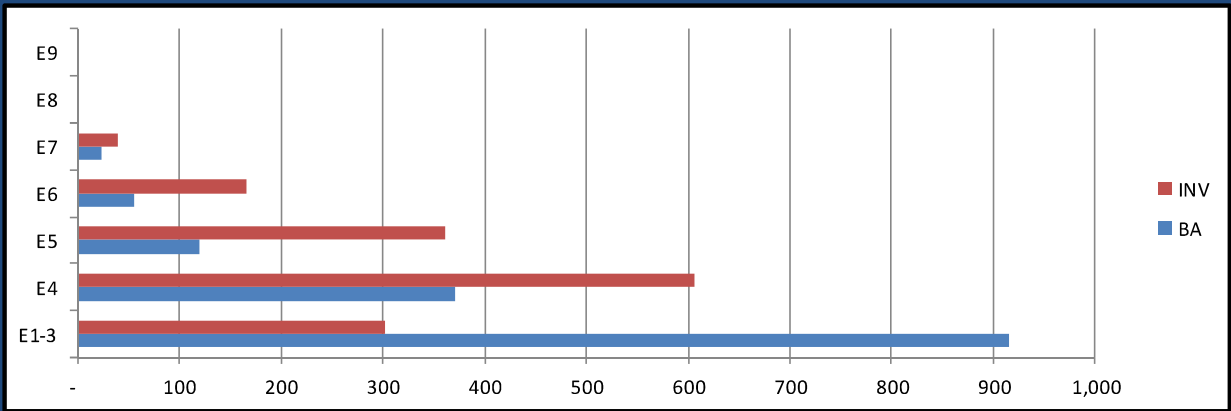
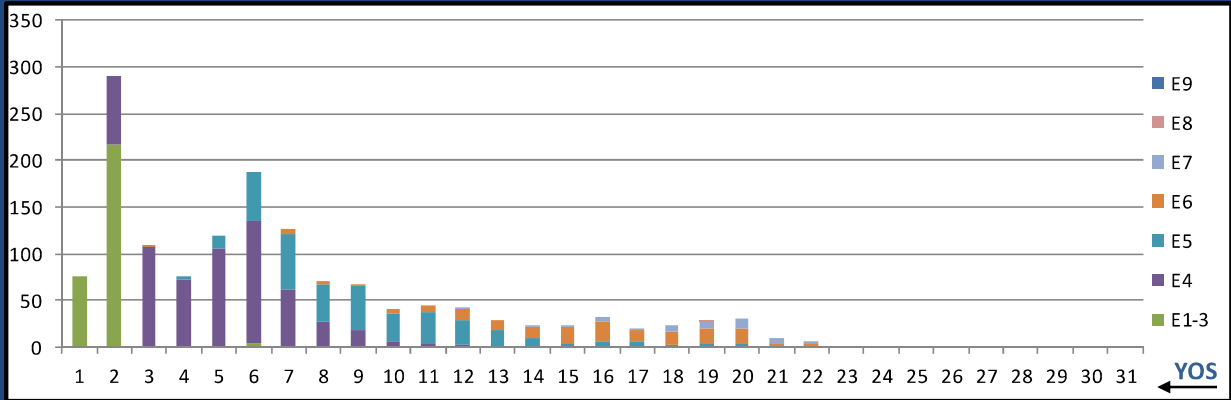
	E1-3	E4	E5	E6	E7	E8	E9	Total
%INV to BA	3%	63%	101%	76%	87%	0%	0%	74%
BA	114	320	377	243	45	-	-	1,099
Total Inventory	3	202	379	184	39	1	-	808
SJA Inventory	47%		91%		89%			

L32A RESP THERAPIST



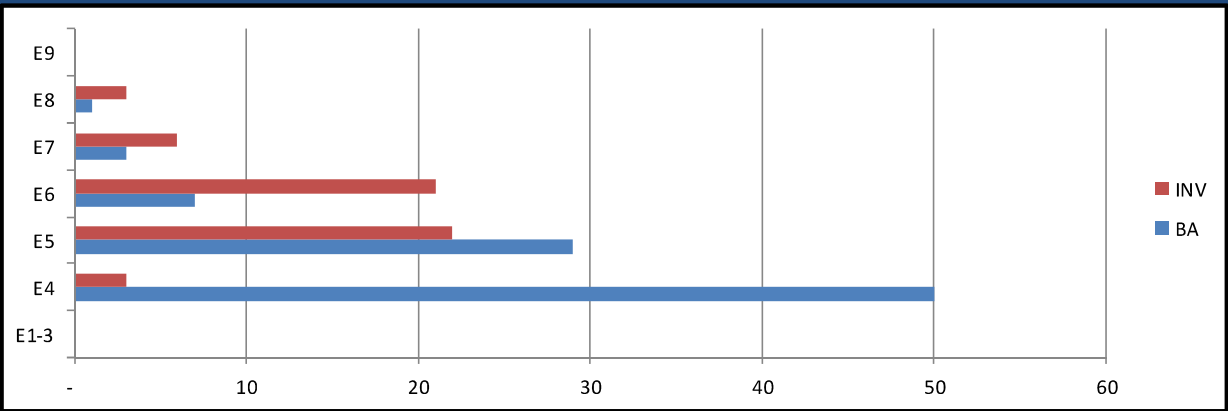
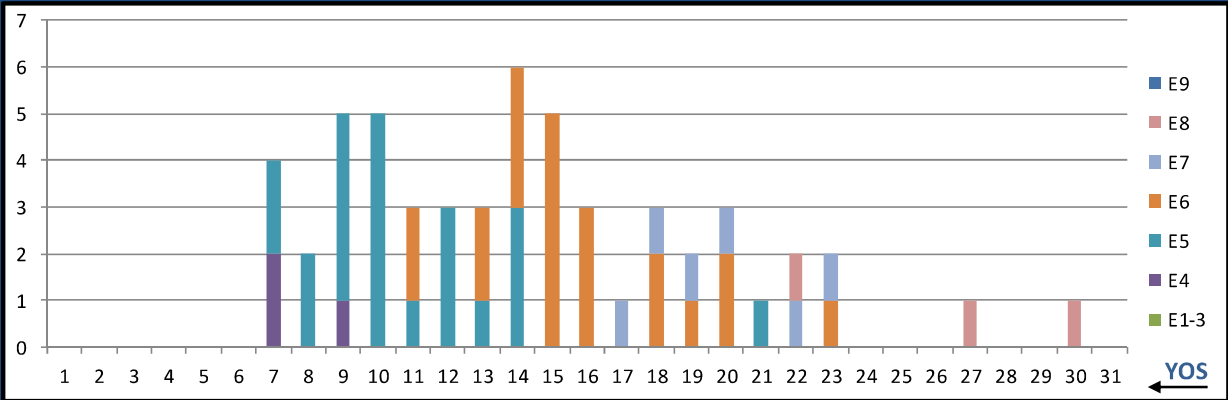
	E1-3	E4	E5	E6	E7	E8	E9	Total
%INV to BA	11%	14%	141%	129%	0%	0%	0%	87%
BA	19	63	71	38	-	-	-	191
Total Inventory	2	9	100	49	7	-	-	167
SJA Inventory	13%		137%		#DIV/0!			

L33A DENTAL ASSISTANT



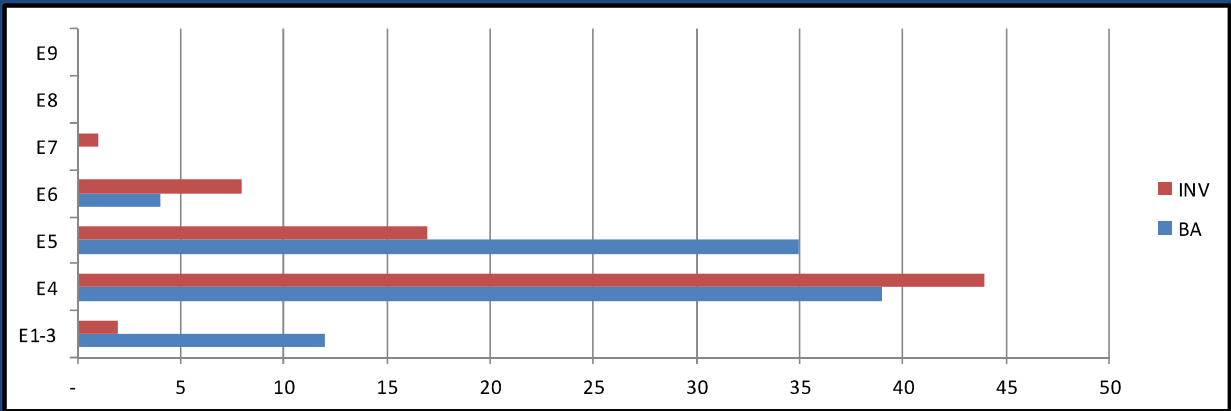
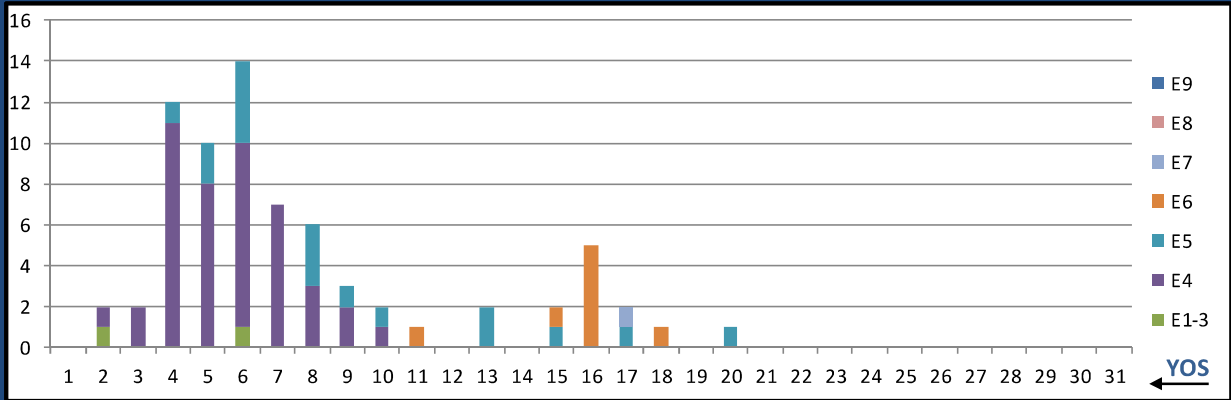
	E1-3	E4	E5	E6	E7	E8	E9	Total
%INV to BA	33%	164%	301%	296%	167%	0%	0%	99%
BA	915	371	120	56	24	-	-	1,486
Total Inventory	302	607	361	166	40	1	-	1,477
SJA Inventory	71%		299%		171%			

L35A DENTAL HYGIENIST



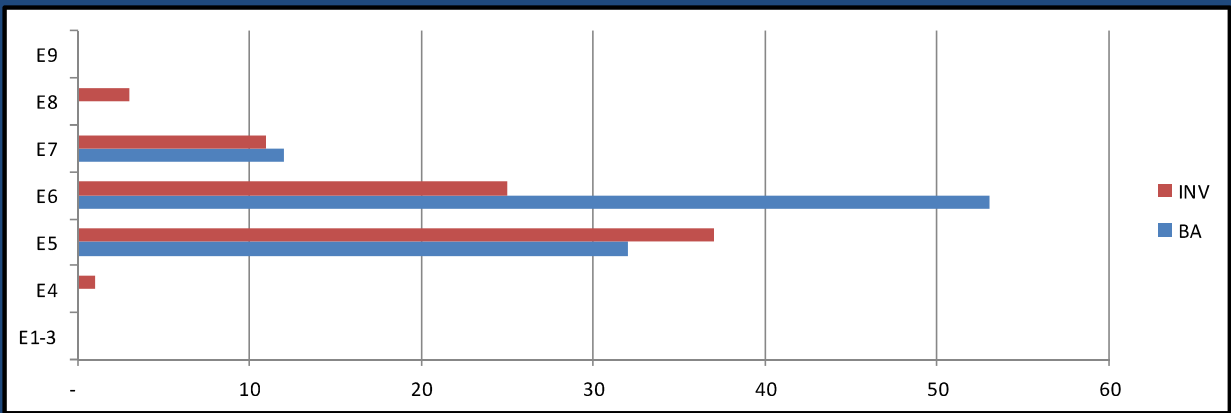
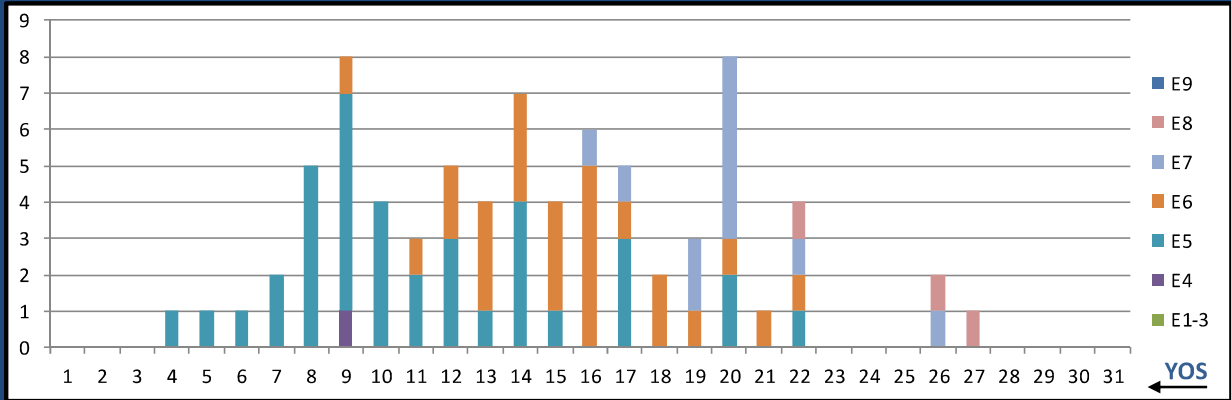
	E1-3	E4	E5	E6	E7	E8	E9	Total
%INV to BA	0%	6%	76%	300%	200%	300%	0%	61%
BA	-	50	29	7	3	1	-	90
Total Inventory	-	3	22	21	6	3	-	55
SJA Inventory	6%		119%		225%			

L36A DENTAL LAB BASIC



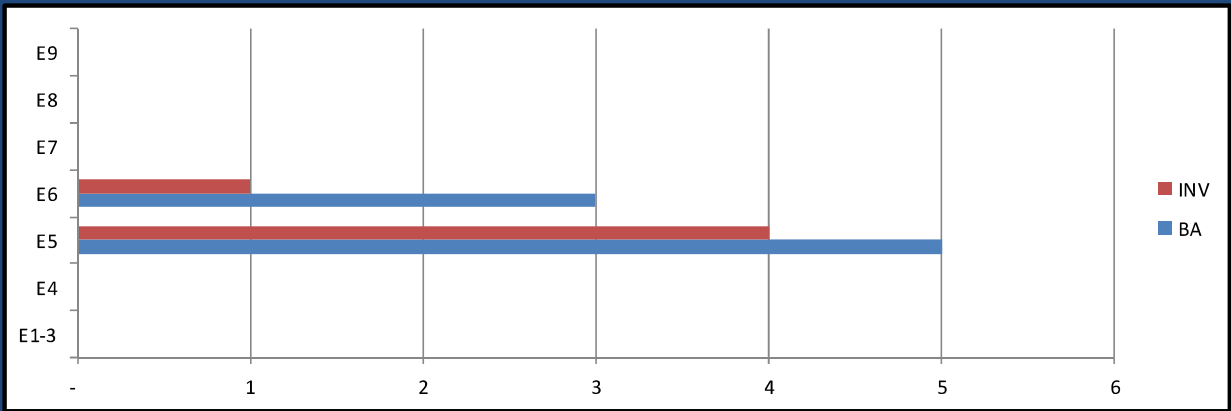
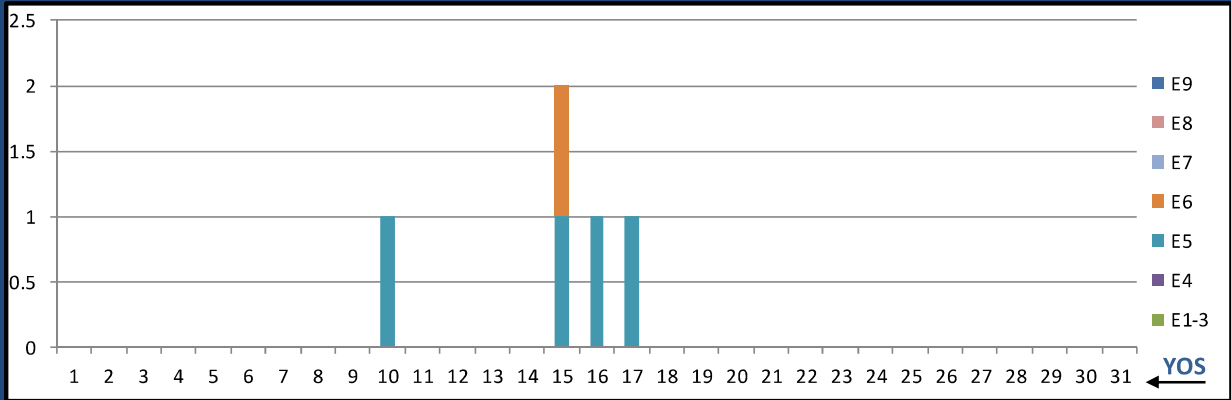
	E1-3	E4	E5	E6	E7	E8	E9	Total
%INV to BA	17%	113%	49%	200%	0%	0%	0%	80%
BA	12	39	35	4	-	-	-	90
Total Inventory	2	44	17	8	1	-	-	72
SJA Inventory	90%		64%		#DIV/0!			

L37A DENTAL LAB ADV



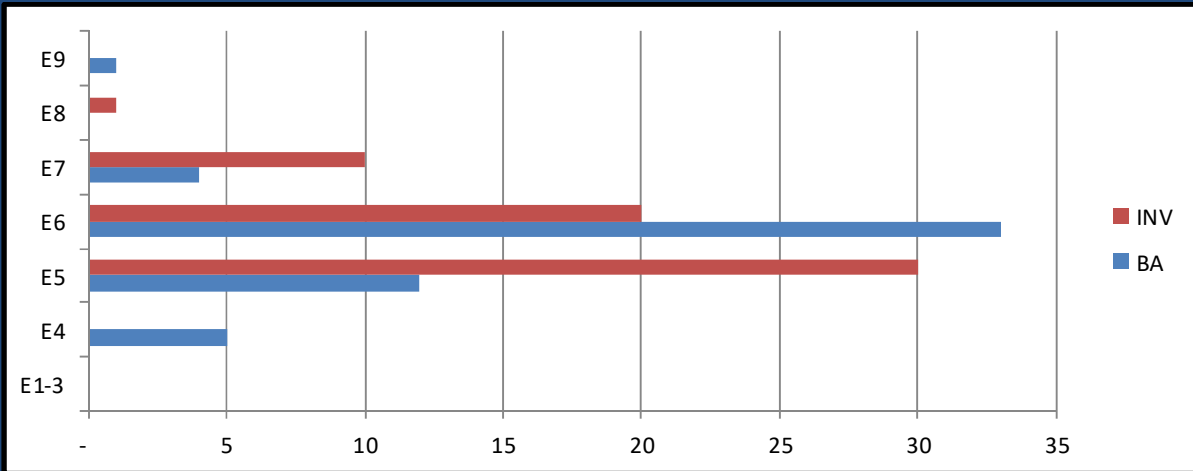
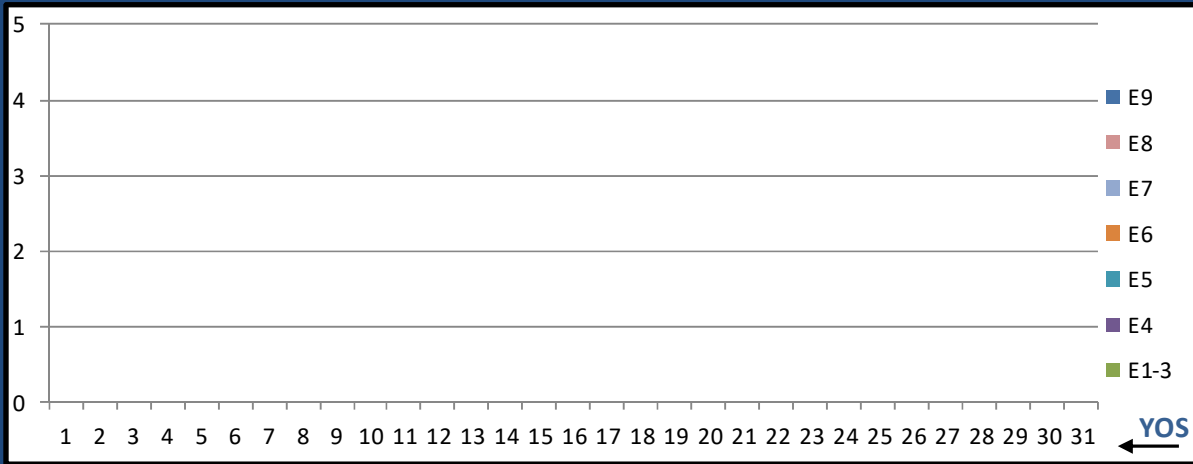
	E1-3	E4	E5	E6	E7	E8	E9	Total
%INV to BA	0%	0%	116%	47%	92%	0%	0%	79%
BA	-	-	32	53	12	-	-	97
Total Inventory	-	1	37	25	11	3	-	77
SJA Inventory	#DIV/0!		73%		117%			

L38A DENTAL ORALMAX



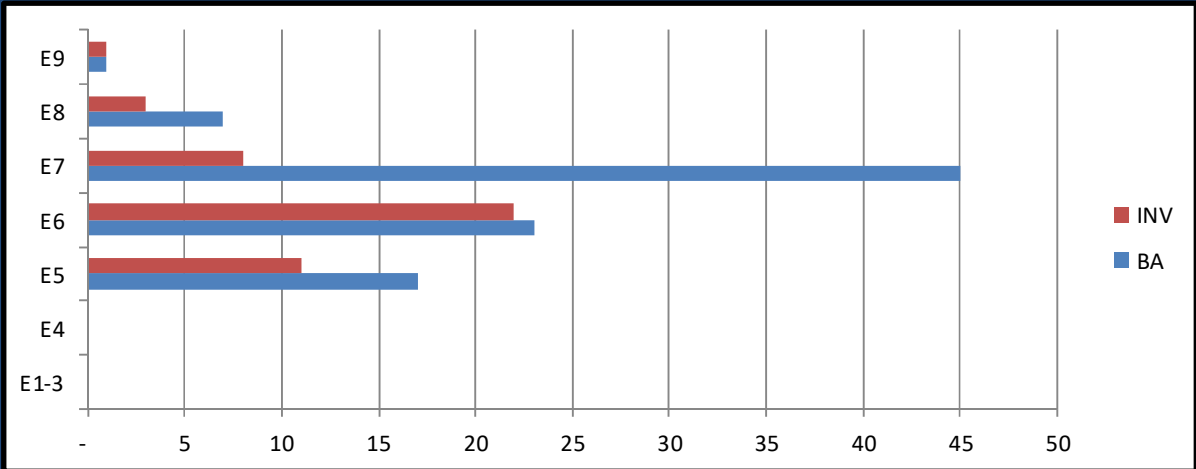
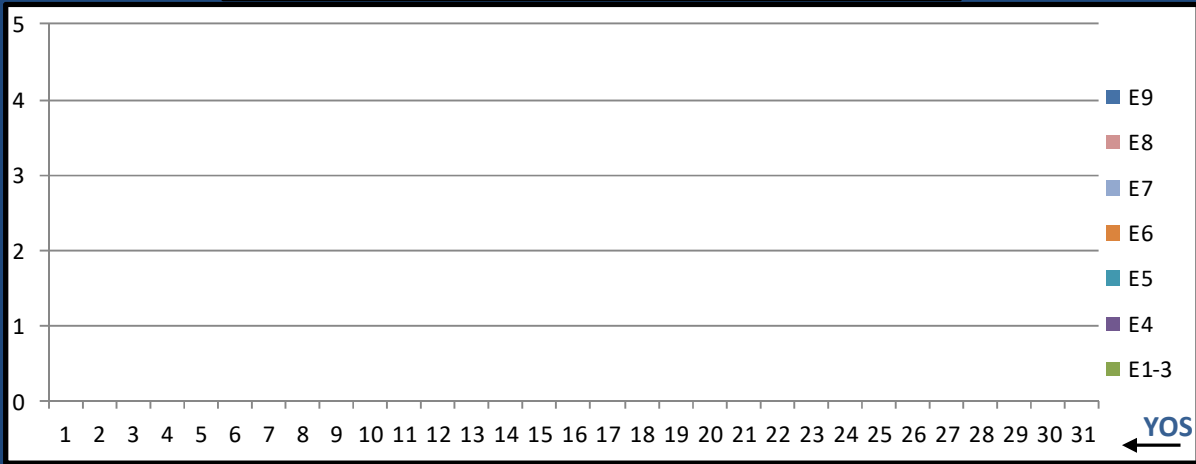
	E1-3	E4	E5	E6	E7	E8	E9	Total
%INV to BA	0%	0%	80%	33%	0%	0%	0%	63%
BA	-	-	5	3	-	-	-	8
Total Inventory	-	-	4	1	-	-	-	5
SJA Inventory	#DIV/0!		63%		#DIV/0!			

810B DRUG & ALCOHOL COUNSELOR INTERN



	E1-3	E4	E5	E6	E7	E8	E9	Total
%INV to BA	0%	0%	250%	61%	250%	0%	0%	111%
BA	-	5	12	33	4	-	1	55
Total Inventory	-	-	30	20	10	1	-	61
SJA Inventory	0%		111%		220%			

810C DRUG & ALCOHOL COUNSELOR



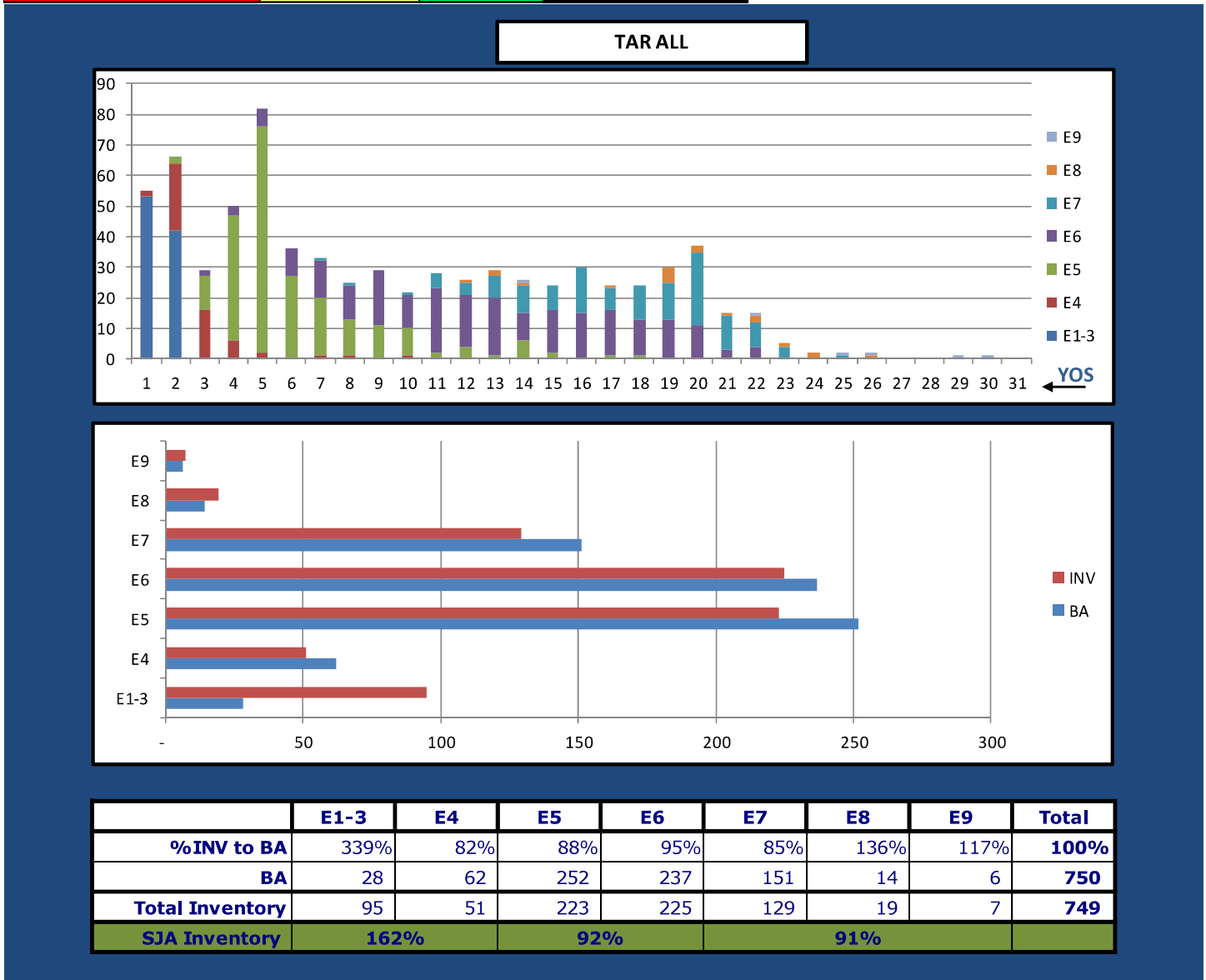
	E1-3	E4	E5	E6	E7	E8	E9	Total
%INV to BA	0%	0%	65%	96%	18%	43%	100%	48%
BA	-	-	17	23	45	7	1	93
Total Inventory	-	-	11	22	8	3	1	45
SJA Inventory	#DIV/0!		83%		23%			

MAY 2026 HM MANNING SNAPSHOT

HM TAR MANNING 5 May 2026	NEC	BA	INV WITH PRIMARY NEC	INV/BA PRIMARY NEC	TOTAL INV W/NEC	TOTAL NEC INV/BA
FIELD MED TECH	L03A	188	255	135.6%	294	156.4%
AERO MED TECH	L04A	41	81	197.6%	81	197.6%
SURFACE IDC	L10A	51	27	52.9%	27	52.9%
DRUG & ALCOHOL COUNS. INTERN	810B	1	0	0.0%	0	0.0%

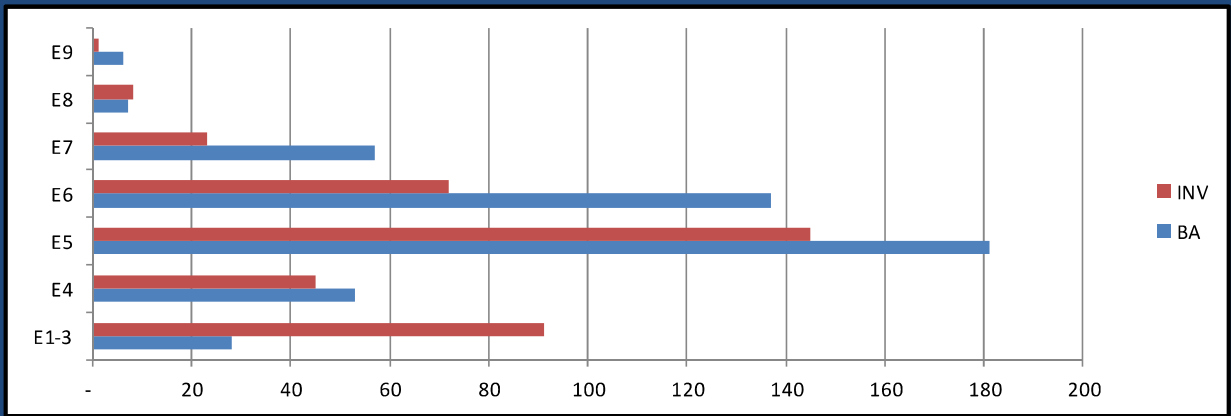
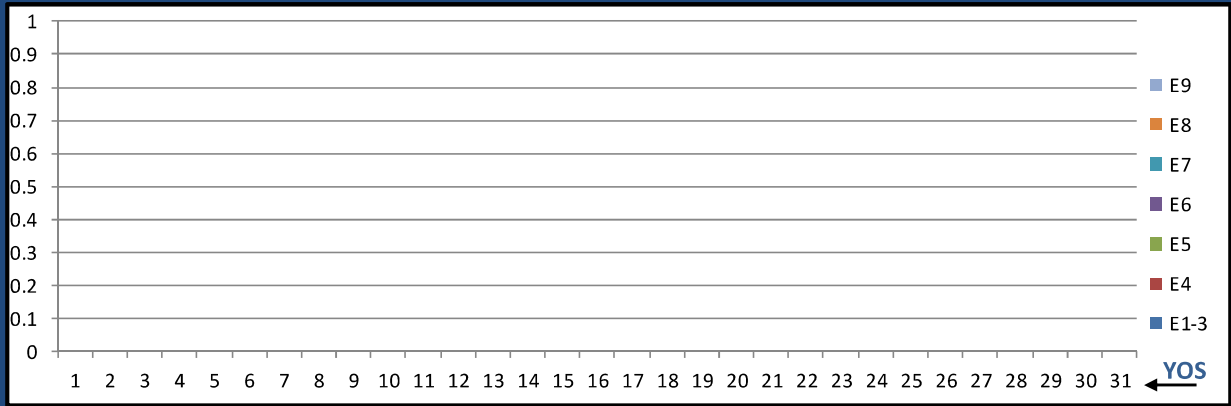
General Duty HM	0000/L03A	658	648	98.5%
NECS (less L03A)	NEC	92	110	119.6%
NOS L500 TOTAL	ALL	750	758	101.1%

Critically Undermanned <85% Undermanned 85%-94% Healthy 95%-104% Overmanned >105%



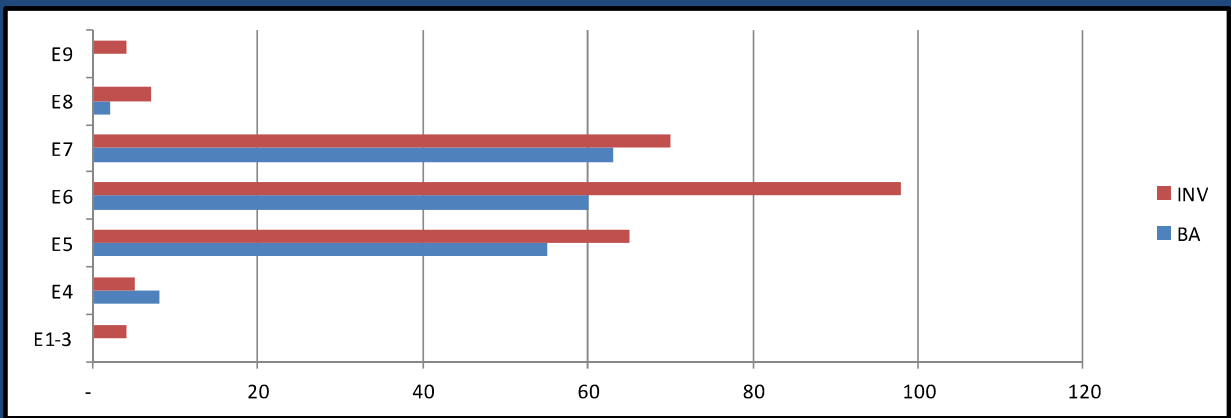
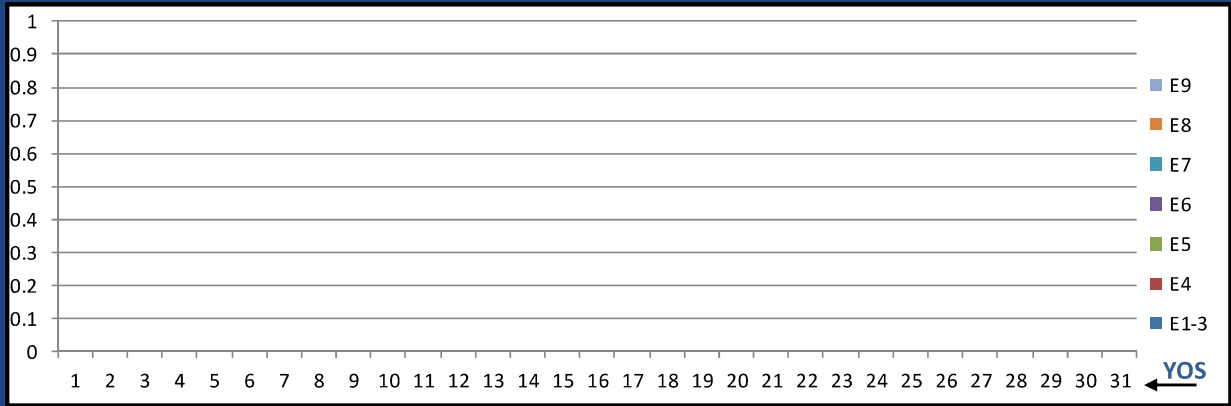
MAY 2026 HM MANNING SNAPSHOT

TAR 0000



	E1-3	E4	E5	E6	E7	E8	E9	Total
%INV to BA	325%	85%	80%	53%	40%	114%	17%	82%
BA	28	53	181	137	57	7	6	469
Total Inventory	91	45	145	72	23	8	1	385
SJA Inventory	168%		68%		46%			

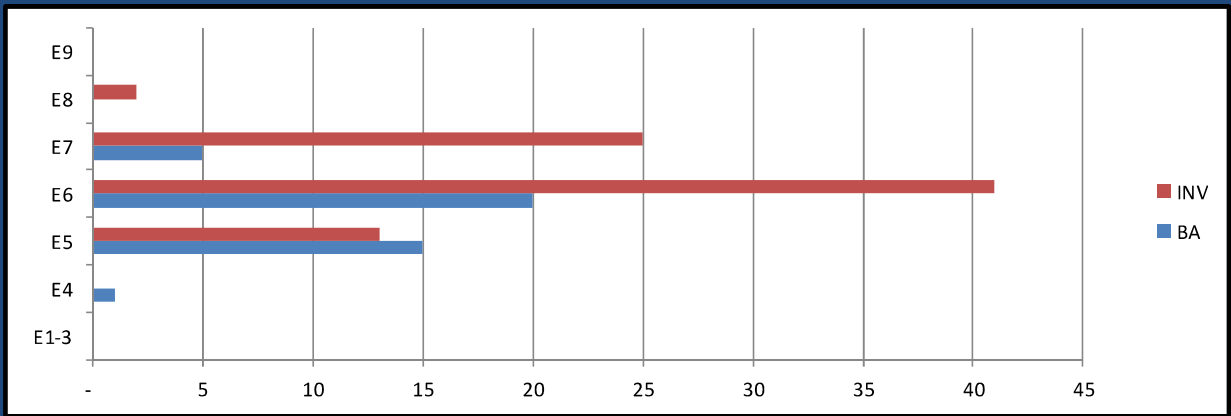
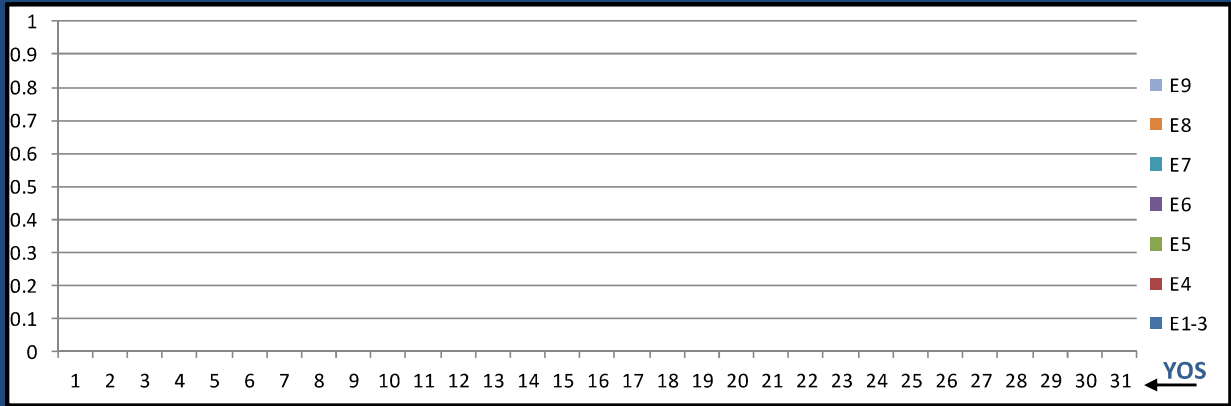
TAR L03A FLD MED TECH



	E1-3	E4	E5	E6	E7	E8	E9	Total
%INV to BA	0%	63%	118%	163%	111%	350%	0%	135%
BA	-	8	55	60	63	2	-	188
Total Inventory	4	5	65	98	70	7	4	253
SJA Inventory	113%		142%		125%			

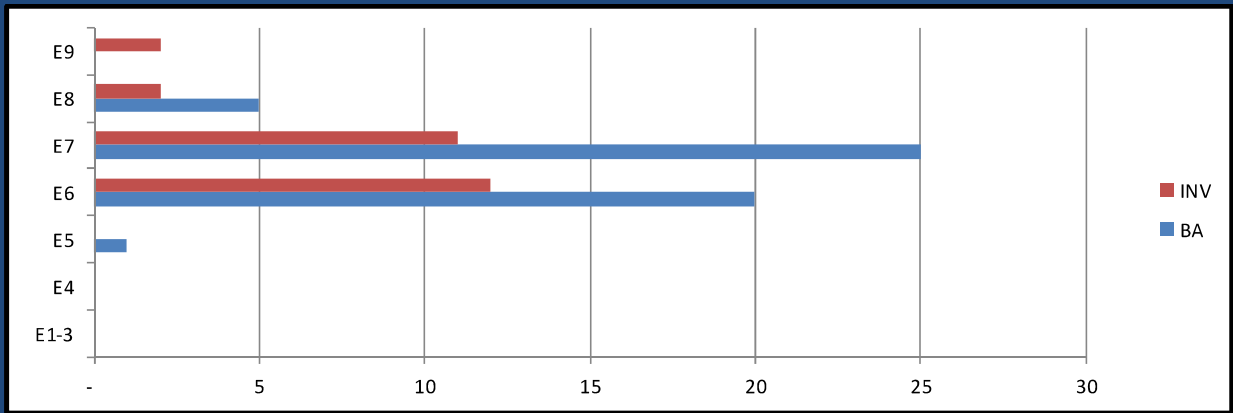
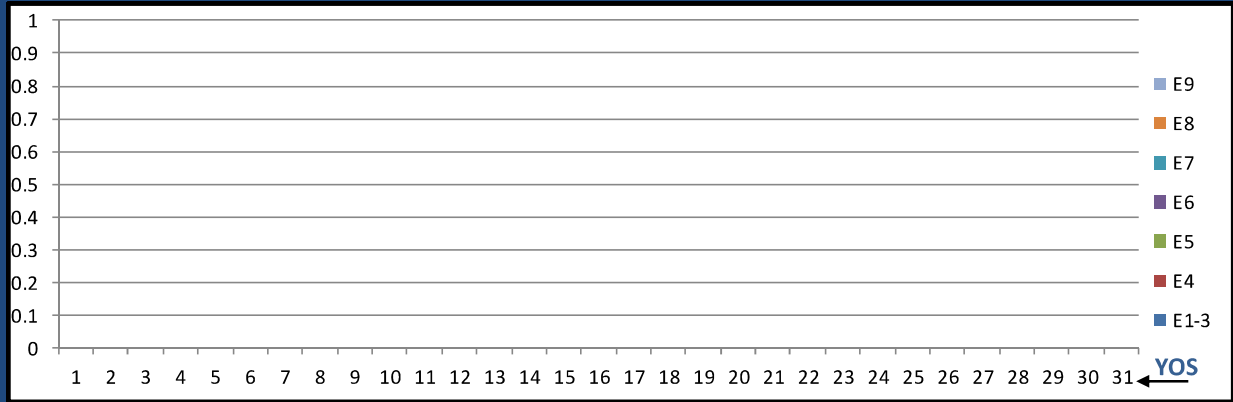
MAY 2026 HM MANNING SNAPSHOT

TAR L04A AERO MED TECH



	E1-3	E4	E5	E6	E7	E8	E9	Total
%INV to BA	0%	0%	87%	205%	500%	0%	0%	198%
BA	-	1	15	20	5	-	-	41
Total Inventory	-	-	13	41	25	2	-	81
SJA Inventory	0%		154%		540%			

TAR L10A SURFACE FORCE IDC



	E1-3	E4	E5	E6	E7	E8	E9	Total
%INV to BA	0%	0%	0%	60%	44%	40%	0%	53%
BA	-	-	1	20	25	5	-	51
Total Inventory	-	-	-	12	11	2	2	27
SJA Inventory	#DIV/0!		57%		50%			